

THE METROPOLITAN MUSEUM OF ART

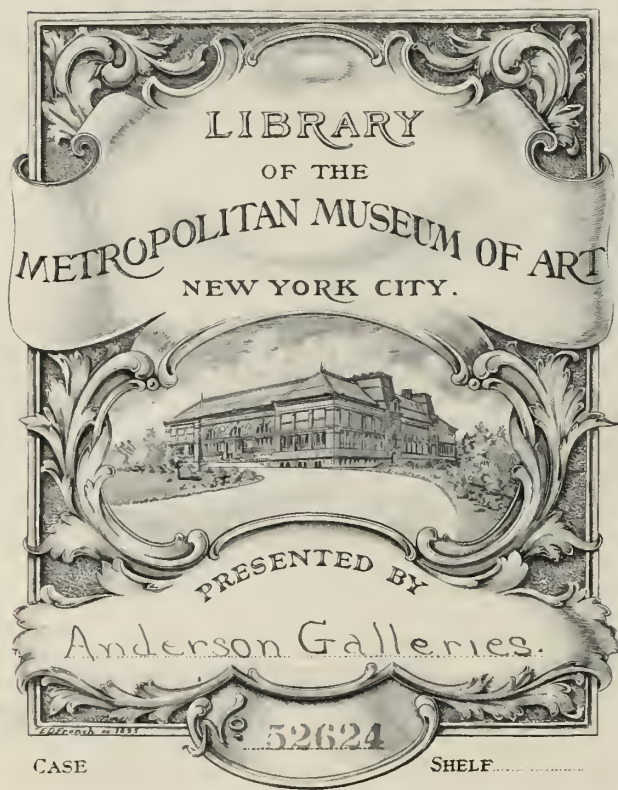


3 0620 00396242 9



119.8

Q
1925⁶



SALE NUMBER 2005
PUBLIC EXHIBITION FROM THURSDAY, NOVEMBER TWENTY-SIXTH

RARE SHIP MODELS

THE COLLECTION OF

MR. COULTON WAUGH

PROVINCETOWN, CAPE COD, MASS.

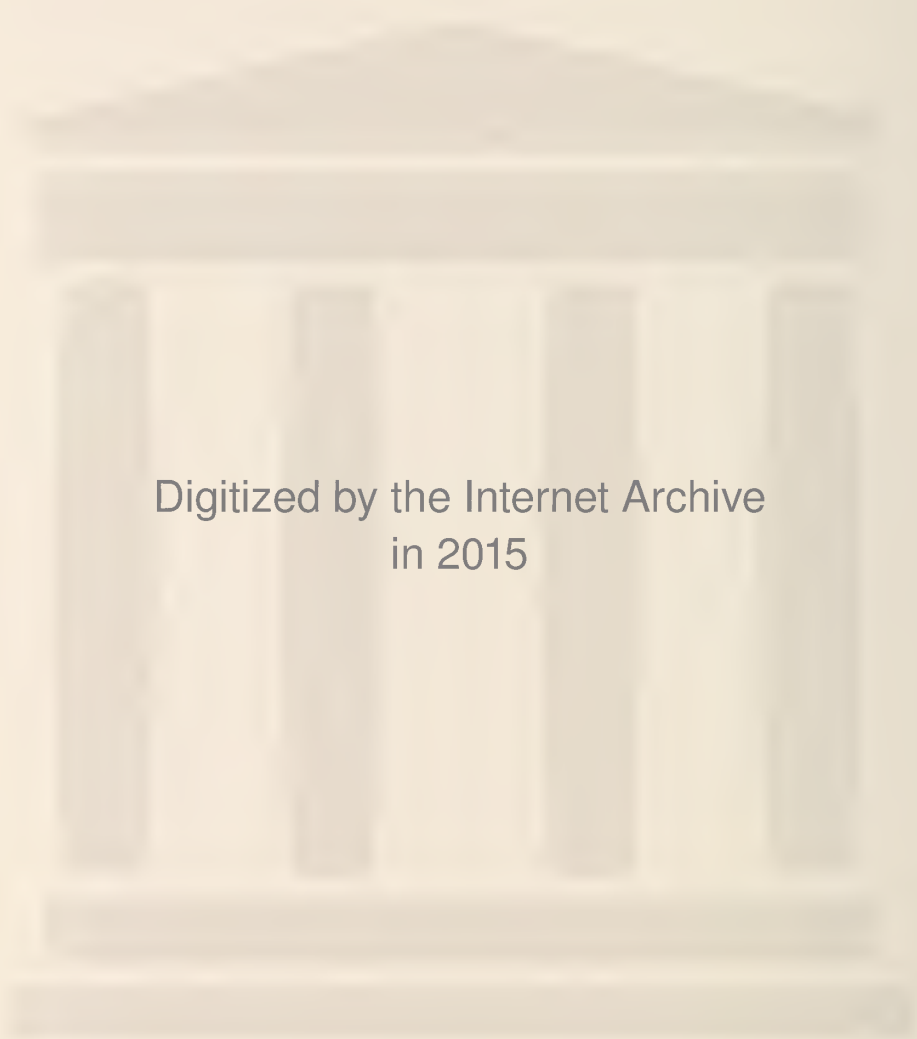
&

THE SHIP MODEL SHOP

PROVINCETOWN, CAPE COD, MASS.

TO BE SOLD BY AUCTION
THURSDAY & FRIDAY EVENINGS
DECEMBER THIRD, FOURTH
AT EIGHT-FIFTEEN

THE ANDERSON GALLERIES
[MITCHELL KENNERLEY, PRESIDENT]
489 PARK AVENUE AT FIFTY-NINTH STREET
NEW YORK



Digitized by the Internet Archive
in 2015



RARE MODEL OF THE U.S. SLOOP-OF-WAR "RATTLESNAKE"

[NUMBER 114]

SALE NUMBER 2005
PUBLIC EXHIBITION FROM THURSDAY, NOVEMBER TWENTY-SIXTH

RARE
SHIP MODELS

MARINE RELICS, PRINTS
PAINTINGS, MAPS

AN IMPORTANT COLLECTION
OF FINE EXAMPLES OF

THE SCRIMSHAWING ART

&

SHIPS' PEWTER & SILVER

THE COLLECTION OF

MR. COULTON WAUGH

PROVINCETOWN
CAPE COD, MASS.

&

THE SHIP MODEL SHOP

PROVINCETOWN
CAPE COD, MASS.

TO BE SOLD BY AUCTION
THURSDAY & FRIDAY EVENINGS
DECEMBER THIRD, FOURTH
AT EIGHT-FIFTEEN

THE ANDERSON GALLERIES

[MITCHELL KENNERLEY, PRESIDENT]

489 PARK AVENUE AT FIFTY-NINTH STREET
NEW YORK

CONDITIONS OF SALE

ALL BIDS TO BE PER LOT AS NUMBERED IN THE CATALOGUE.

The highest bidder to be the buyer. In all cases of disputed bids the decision of the Auctioneer shall be final.

Buyers to give their names and addresses and to make such cash payments on account as may be required, in default of which the lots purchased shall be resold immediately.

Purchases to be removed at the buyer's expense and risk within twenty-four hours from the conclusion of the sale, and the remainder of the purchase money to be paid on or before delivery, in default of which The Anderson Galleries, Incorporated, will not be responsible for any loss or damage whatever, but the lot or lots will be left at the sole risk of the purchaser, and subject to storage charges.

All lots will be placed on public exhibition before the date of sale, for examination by intending purchasers, and The Anderson Galleries, Incorporated, will not be responsible for the correctness of the description, authenticity, genuineness, or for any defect or fault in or concerning any lot, and make no warranty whatever, but will sell each lot exactly as it is, WITHOUT RECOURSE.

If accounts are not paid and purchases removed within twenty-four hours of the conclusion of the sale, or, in the case of absent buyers, when bills are rendered, any sum deposited as part payment shall be forfeited, and The Anderson Galleries, Incorporated, reserve the right to resell the lot or lots by either private or public sale, without further notice, and if any deficiency arises from such resale it shall be made good by the defaulter, together with all expenses incurred. This condition shall be without prejudice to the right of this Company to enforce the sale contract and collect the amount due without such resale, at its own option.

The Anderson Galleries, Incorporated, will afford every facility for the employment of carriers and packers by the purchasers, but will not be responsible for any damage arising from the acts of such carriers and packers.

The Anderson Galleries make no charge for executing orders for their customers and use all bids competitively, buying at the lowest price permitted by other bids.

*A Priced Copy of this Catalogue may be obtained for One Dollar
for each Session of the Sale*

THE ANDERSON GALLERIES, INC.

489 PARK AVENUE AT FIFTY-NINTH STREET, NEW YORK

TELEPHONE REGENT 0250

CATALOGUES ON REQUEST

SALES CONDUCTED BY MR. F. A. CHAPMAN AND MR. A. N. BADE

ORDER OF SALE

THURSDAY EVENING, DECEMBER THIRD

NAVAL AND MARINE RELICS	1- 16
RARE EXAMPLES OF THE SCRIMSHAW ART. THE MOST IMPORTANT COLLECTION EVER OFFERED AT PUBLIC SALE	17- 67
RARE AMERICAN AND ENGLISH NAVAL, MARINE AND WHALING PRINTS	68- 96
RARE SHIP MODELS IN WOOD, BONE AND IVORY—AMER- ICAN, ENGLISH AND FRENCH—MEN-OF-WAR, FRIGATES, PRIVATEERSMEN, MERCHANTMEN AND CLIPPER SHIPS	97-156

FRIDAY EVENING, DECEMBER FOURTH

MARINE AND NAVAL RELICS	157-173
EARLY DECORATIVE MAPS OF NORTH AND SOUTH AMERICA	174-183
A RARE COLLECTION OF SHIPS' PEWTER, SILVER AND GLASS	184-208
RARE AMERICAN AND ENGLISH NAVAL, MARINE AND WHALING PRINTS	209-237
MARINE PAINTINGS AND SHIPS' PORTRAITS: BY THE ARTISTS OF THE 18TH AND EARLY 19TH CENTURY	238-256
RARE SHIP MODELS IN WOOD, BONE AND IVORY: AMER- ICAN, ENGLISH AND FRENCH MEN-OF-WAR, FRIGATES, PRIVATEERSMEN, MERCHANTMEN AND CLIPPER SHIPS	257-311

FIRST SESSION

NUMBERS 1-156

NAVAL AND MARINE RELICS

NUMBERS 1-16

1 STAFFORDSHIRE LUSTRE MARINE PLATE

ENGLISH, 18TH CENTURY

27 ⁵⁶ - Cream ground with purple lustre bandings. Large centre medallion of a Man-of-War in full sail. *Diameter, 9½ inches*

2 STAFFORDSHIRE LUSTRE MARINE PLATE

ENGLISH, 18TH CENTURY

20 - Matching the preceding number. *Diameter, 9½ inches*

3 EARLY BRISTOL GLASS HANGING BALL

ENGLISH, EARLY 19TH CENTURY

15 - Milk-white ground with many brilliant transfers in color on the interior, of ships and shipping subjects. *Diameter, 5 inches*

4 MINIATURE MODEL OF A SHIP'S WATER-CASK

17 ⁵⁶ - Constructed of oak and bound with brass hoops. *Length, 6½ inches*

5 TWO BRONZE MODELS OF SHIPS' ANCHORS

11 - Both finely modelled to scale. (2) *Length, 5 and 7 inches*

6 18TH CENTURY MODEL OF A SHIP'S ANCHOR

13 - Boxwood and bronze model built to scale. *Length, 7 inches*

7 18TH CENTURY SHIP'S COMPASS

6 - Miniature mother-of-pearl dial set in circular flat satinwood case. *Diameter, 5½ inches*

8 18TH CENTURY SHIP'S COMPASS

17 - Decorated dial with numerals and name Smith & Son, London. Enclosed in circular flat glazed case. *Diameter, 5¾ inches*

9 EARLY BRASS SHIP'S BINNACLE

10 - Swivel compass in brass glazed case. Made by Spencer, Browning & Co., London. *Height, 4 inches*

10 **BETTS'S PATENT PORTABLE GLOBE**

Linen-covered globe with world map. Mounted on steel collapsible frame and shaft. Marked "Betts's New Portable Terrestrial Globe, London."

Length, 28 inches

30 - The only one of these globes known to exist. Fashioned on the principle of the present day collapsible umbrella. In perfect condition and enclosed in original maker's case.

[SEE ILLUSTRATION]

11 **BRONZE MODEL OF A SHIP'S CAPSTAN**

56
22 - Finely fashioned model of an old ship's capstan, modelled to scale in bronze.

Height, 5 inches

12 **MODEL OF AN OLD NAVAL CANNON**

15 - Model in bronze, of an old Naval cannon. Mounted on wooden ship's truck.

Length, 7½ inches

13 **MODEL OF AN OLD NAVAL CANNON**

20 - Wood model of an old Naval cannon. Mounted on ship's truck with metal wheels.

Length, 11 inches

14 **DECORATED CARVED PINE FIGUREHEAD**

AMERICAN, 18TH CENTURY

30 - Figurehead of American sailing ship "Polly". Bust of buxom matron with long curling hair, dressed in low-cut bodice, set on scrolled base and oblong plinth. Painted walnut color.

Height, 22 inches



THE ONLY ONE KNOWN TO EXIST
[NUMBER 10]



[16]

[15]

[15]

[16]

15 **MINIATURE QUEEN ANNE WALNUT CELESTIAL AND TERRESTRIAL GLOBES**

BY J. & W. NEWTON, LONDON, 1818

Decorated globes in swivel brass band. Set on turned Queen Anne pedestal stand of three turned legs joined with turned stretchers. (2) *Height, 10½ inches*

A RARE pair of globes, seldom found in this small size.

[SEE ILLUSTRATION]

16 **PAIR OF MINIATURE MAHOGANY AND DECORATED WORLD GLOBES**

BY PHILIP & SON, LONDON, 18TH CENTURY

Decorated world globes in swivel brass band with numerals. Set in turned pedestal on tripod scrolled snake feet. (2) *Height, 7 inches*

VERY RARE in this size.

[SEE ILLUSTRATION]

RARE EXAMPLES OF THE SCRIMSHAW ART

THE MOST IMPORTANT COLLECTION

EVER OFFERED AT PUBLIC SALE

NUMBERS 17-67

SCRIMSHAW, OR SCRIMSHAWING

SCRIMSHAW:—A nautical word of unstable orthography; origin unknown. To engrave various fanciful designs on shells, whales' teeth, walrus tusks, etc.; in general, to execute any piece of ingenious mechanical work. (Sailor's language.)—*Century Dictionary*.

One of the most fruitful sources of amusement to a whale fisherman and one which often so engrosses his time and attention as to cause him to neglect his duties, is known as scrimshawing. Scrimshawing, which by the way is the more acceptable form of the term, is the art of manufacturing useful and ornamental articles at sea.—*Fisheries of U. S. V-II-231*.

The above are the only two technical definitions obtainable. Scrimshawing, however, meant much to the old "salt", marooned at sea as he often was for indefinite periods. It was not only his expression of individual art, but also the medium through which he recorded the incidents and impressions of his hazardous daily life.

The subjects, or compositions of subjects, were naturally of the sea or whale fishing, as this was really the extent of the old "salt's" existence.

The actual execution was done either with a jack-knife, or preferably, a sail needle, which was large enough for the sailor to handle and at the same time strong enough and sharp enough to make an excellent etching tool.

Opinions differ as to when the earliest example of the art appeared, but we are sure that some specimens date back to the late 18th century, and that more and probably better specimens were done during the period from 1830 to 1850, when whale fishing was most intensively and extensively followed.

This collection is regarded by Marine authorities as the most comprehensive and best executed ever assembled. It contains exquisite and novel specimens done in practically every quarter of the globe, from the frozen Arctic and Antarctic to the tropics, by Mariners of American and Anglo-American origin.

17 **SCRIMSHAW WHALE'S TOOTH**

✓✓-
Displaying a complete whaling scene, showing two large American Whalers, one of which has lowered a longboat, preparatory to harpooning a large spouting whale. Finely etched in black on one side of tooth. *Length, 8 inches*

[SEE ILLUSTRATION]

18 **SCRIMSHAW TUSK OF A SEA LION**

65-
Displaying a complete Naval action with four large Ships-of-the-Line actively engaged, with a boarding party in a cutter to the left. The whole finely etched in black on flattened surface of tusk.

Length, 13¼ inches

An unusual subject and finely executed.

[SEE ILLUSTRATION]

19 **SCRIMSHAW WHALE'S TOOTH**

25-
Displaying a complete whaling scene, with a distant whaling ship in full sail and icebergs. The front with large whale which has been harpooned and the crew of the whaleboat preparing to take the carcass in tow. Reverse with full-length figure of girl in meditative attitude. Finely etched in black on both sides. *Length, 6½ inches*

[SEE ILLUSTRATION]

20 **PAIR OF SCRIMSHAW WHALE'S TEETH**

50-
Displaying the varieties of whaling. One, with the whaling ship and a large whale diving into deep water, and distant iceberg. In the second, the whale has again come to the surface and has crushed the boat. Finely etched in black. (2) *Length, 6½ inches*

[SEE ILLUSTRATION]

21 **PAIR OF SCRIMSHAW WHALE'S TEETH**

30-
Displaying an American Frigate in full sail, an American Whaler in full sail and a Brig in full sail. Further decorated with crossed American Flags and anchors, floral and leaf motifs, and the Whaler's longboat harpooning a whale. Both finely etched in continuing design in black and colors. (2) *Length, 5 and 5½ inches*

[SEE ILLUSTRATION]



REMARKABLE SCRIMSHAW WORK

[NUMBERS 17-28]

22 SCRIMSHAW WHALE'S TOOTH

1756 Displaying an English Man-of-War, stern view of a four-decker, in full sail. Finely etched in black on one side of tooth.

Length, 5½ inches

[SEE ILLUSTRATION]

23 SCRIMSHAW WHALE'S TOOTH

20- Displaying large whaling ship coming to anchor in the foreground, and a large spouting whale. Reverse, "Batida, wife of Stephen, 1130." Finely etched in black on both sides. *Length, 5½ inches*

[SEE ILLUSTRATION]

24 SCRIMSHAW SEA-LION'S TUSK

50- Displaying a Naval engagement with three Men-of-War in close action. The ships are of the early 18th century. Finely etched in black on flattened surface of tusk. *Length, 9¼ inches*

One of the finest specimens of Scrimshaw work extant.

[SEE ILLUSTRATION]

25 **SCRIMSHAW WHALE'S TOOTH**

20 — Displaying a complete whaling scene, with the American Whaler to the left and a longboat manned preparatory to harpooning a whale. Finely etched in black on polished surface of tooth. *Length, 6 inches*

[SEE ILLUSTRATION, PAGE 7]

26 **SCRIMSHAW WHALE'S TOOTH**

20 — Displaying an American Whaler in the Arctic. The Whaler is seen at anchor, with a large and small whale drawn up on an iceberg. Scene finely etched in black on one side of wide tooth.

Length, 6 inches

[SEE ILLUSTRATION, PAGE 7]

27 **SCRIMSHAW WHALE'S TOOTH**

17⁵⁶ — Displaying a complete whaling scene, with the American Whaler in full sail to the right; several longboats have left the ship and are giving chase to a blowing whale. Finely etched in black on polished surface of tooth.

Length, 7 inches

[SEE ILLUSTRATION, PAGE 7]

28 **SCRIMSHAW WHALE'S TOOTH**

37⁵⁶ — Displaying an American Whaler in the Arctic. The Whaler is seen at anchor, with a large sperm whale drawn up on the ice. The scene finely etched in black on one side of wide tooth. *Length, 6 inches*

[SEE ILLUSTRATION, PAGE 7]

29 **SCRIMSHAW WHALE'S TOOTH**

32⁵⁶ — Displaying an American Whaler cutting in, with the longboat out engaged in harpooning. Reverse, the Whaler homeward bound. Finely etched in black on both sides. *Length, 7½ inches*

30 **SCRIMSHAW WHALE'S TOOTH**

22⁵⁶ — Displaying an American Whaler on the Arctic Coast. The longboat has just struck a whale. Finely etched in black. *Length, 6¼ inches*

49 ✓
31 **SCRIMSHAW WHALE'S TOOTH**

Displaying a Whaler in full sail, with several of her catch in tow.
Finely etched in black on one side of tooth. *Length, 8 inches*

70 -
32 **SCRIMSHAW WHALE'S TOOTH**

Displaying an American Whaler in full sail, with her longboats giving chase to a spouting whale. Finely etched in black on both sides.
Length, 7¼ inches

12 ✓
33 **TWO SCRIMSHAW WHALE'S TEETH**

One displaying Frigate at anchor; the other, early Volunteer Fire Department actively engaged in extinguishing a fire. (2)
Length, 5 and 4½ inches

10 -
34 **TWO SCRIMSHAW WHALE'S TEETH**

One displaying an American Frigate in full sail, the other, plain.
(2) *Length, 5½ and 5½ inches*

22 ✓
35 **SCRIMSHAW WHALE'S TOOTH**

Displaying a complete whaling scene, with the American Whaler in full sail, and longboat among four whales, with several icebergs in the distance. Finely etched in black on one side of tooth.
Length, 7¼ inches

[SEE ILLUSTRATION, PAGE 10]

32 ✓
36 **SCRIMSHAW WHALE'S TOOTH**

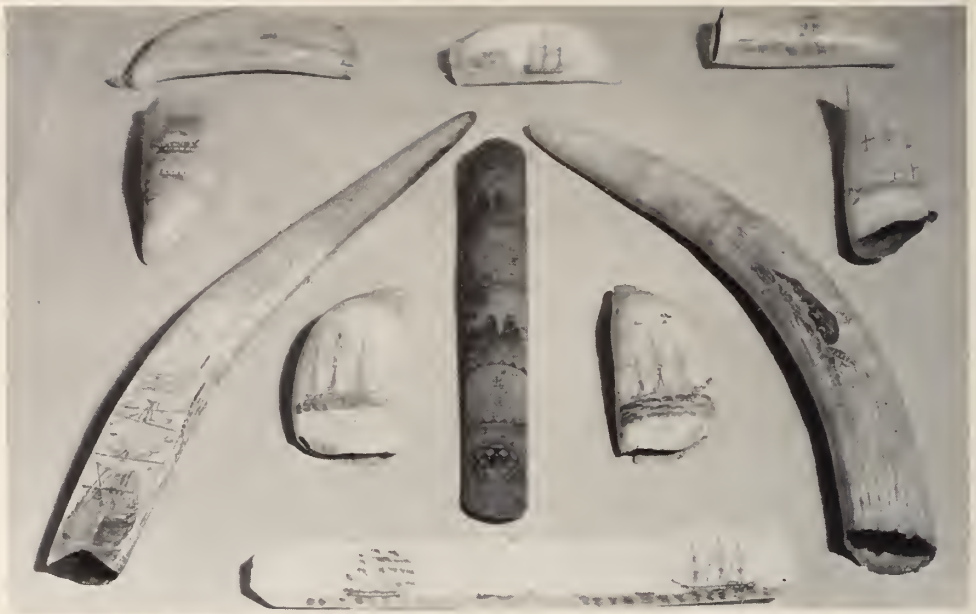
Displaying an American Frigate at anchor, with a rocky coast to the left. The scene finely etched in black, covering bevelled side of tooth.
Length, 6 inches

[SEE ILLUSTRATION, PAGE 10]

60 -
37 **SCRIMSHAW WHALE'S TOOTH**

Displaying a complete whaling scene, with an American Whaler in the Arctic, distant icebergs, and a whaleboat giving chase to a whale. Finely etched in black on one side of tooth. *Length, 6 inches*

[SEE ILLUSTRATION, PAGE 10]



WHALES' TEETH AND WALRUS TUSK SCRIMSHAWING
[NUMBERS 35-44]

38 SCRIMSHAW WHALE'S TOOTH

20 — Displaying a complete whaling scene, with upright portrait of a whaling ship with the whaling boat in the foreground, having thrown one harpoon into a spouting whale. Finely etched in black in continuing scene, the centre of the tooth polished for grog cup.

Length, 6½ inches

[SEE ILLUSTRATION]

39 SCRIMSHAW WALRUS TUSK

35 — Displaying a three-decker Man-of-War, with partly furled sails and bow view. Finely etched in black on flattened surface at base of tusk.

Length, 21 inches

[SEE ILLUSTRATION]

40 **PAIR OF SCRIMSHAW WHALE'S TEETH**

42 ✓
Displaying in portraiture the American Whaler "Tartar". One with view of the ship in full sail; the other with the ship riding a storm, with all sails furled. Finely etched in black and captioned "Tartar" on one side of teeth. (2) *Length, 7 inches*

[SEE ILLUSTRATION]

25 ✓
41 **SCRIMSHAW BALEEN STOMACHER**

Displaying arched panels with ships and growing plants, punctuated with geometric medallions and borders. *Length, 14½ inches*

[SEE ILLUSTRATION]

42 **SCRIMSHAW DECORATED WALRUS TUSK**

47 ✓
Displaying a spirited whaling scene. In the foreground a large whale capsizing a whaleboat, distant American whaling ship and ice floes. Finely etched in black. *Length, 20 inches*

[SEE ILLUSTRATION]

85 ✓
43 **SCRIMSHAW WHALE'S TOOTH**

Displaying the U.S.S. "Constitution", her main course set. Finely etched in detail in black and in colors. *Length, 7 inches*

[SEE ILLUSTRATION]

130 ✓
44 **SCRIMSHAW WHALEBONE STOMACHER**

Displaying a complete whaling scene. Two large American whaling ships in full sail at right and left and in centre three whaleboats, the one preparing to harpoon a spouting whale. Finely etched in black on one side; reverse captioned "Emma Russell".

Length, 13¼ inches

[SEE ILLUSTRATION]

12 ✓
45 **TWO SCRIMSHAW WHALE'S TEETH**

One displays a ship in full sail, above which is a figure of Neptune. The other, cross flags and guns, captioned, "Gibraltar". (2)

Length, 5 and 6 inches

15 ✓
46 **SCRIMSHAW WALRUS TUSK**

Displaying an American Man-of-War in full sail entering a tropic harbor. Distant hillocks with palm trees are shown. Finely etched on one side of tusk. *Length, 13¼ inches*

22 ✓
47 **TWO SCRIMSHAW WHALE'S TEETH**

One displaying a Brig, above which is an American Eagle and shield; the other, centre American Eagle and Shield with jardinière of flowers at top and base. Finely etched in black and colors. (2)

Length, 6 and 6½ inches

30 -
48 **PAIR OF SCRIMSHAW WHALE'S TEETH**

Displaying two American Whaling Ships in full sail. Etched in black on one side of teeth. (2)

Length, 6½ inches

27 ✓
49 **SCRIMSHAW WHALE'S TOOTH**

Displaying a complete whaling scene, with a large American Whaler in full sail, following her longboat giving chase to a sperm whale. Finely etched in black on one side of tooth.

Length, 6¼ inches

27 ✓
50 **SCRIMSHAW WHALE'S TOOTH**

Displaying on one side oval medallion, "Mary Magdalen"; reverse, "Rolla". Finely etched in black on both sides.

Length, 6¼ inches

22 ✓
51 **SCRIMSHAW WHALE'S TOOTH**

Displaying the battle of the "Constitution" and "Guerrière," evidently the beginning of the action and showing the first broadside of the "Constitution". Finely etched in black on one side of tooth.

Length, 5 inches

32 ✓
52 **PAIR OF SCRIMSHAW WHALE'S TEETH**

Displaying whaling ships in full sail, with many whales and icebergs. Reverse, two portraits of sailors' sweethearts of the period of the early fifties. Finely etched in black and colors on both sides of teeth. (2)

Length, 4½ inches

25 -
53 **PAIR OF SCRIMSHAW WHALE'S TEETH**

Displaying bust portraits, one of a Spanish beauty, the other, of an American girl of the period of the early fifties. Finely etched in black on one side of teeth. (2)

Length, 5½ inches



SCRIMSHAW HORN CUP
AND ENGRAVED HORN CUP
WITH NEW YORK VIEW
[NUMBER 54] [NUMBER 55]

54 SCRIMSHAW HORN CUP

Transparent steer horn in form of cup with bone bottom, displaying an English Frigate in full sail. Finely etched in black on front of cup. *Height, 3 inches*

An exceptionally fine example of Scrimshaw work.

[SEE ILLUSTRATION]

55 ENGRAVED HORN CUP WITH EARLY NEW YORK VIEW

CIRCA 1760

Displaying New York City with sky-line and steeples of the churches, and Fort George. Captioned New York and surmounted by the British Coat-of-Arms. Reverse, the Hudson River with the cities of Albany, Schenectady, Fort William Johnson, Stillwater, Saratoga, etc. Fine contemporary historic cup, signed by John Hamilton. *Height, 5 inches*

EXCEEDINGLY RARE.

[SEE ILLUSTRATION]

17-16
56 **PAIR OF SCRIMSHAW WHALE'S TEETH**

Displaying three-quarter length portraits of beauties of the period of the early fifties. Reverse, varied portraits of Saint Elijah. Finely etched in black and in colors on both sides of the teeth. (2)

Length, 5½ inches

37-16
57 **SCRIMSHAW WHALE'S TOOTH**

Displaying a complete whaling scene, with a Whaler in full sail and a longboat giving chase to a large sperm whale. Finely etched in black on one side of tooth.

Length, 5 inches

19-
58 **SCRIMSHAW WHALE'S TOOTH**

Displaying a complete whaling scene, with a large Whaler in full sail, with the whaling boat giving chase to a spouting whale. Finely etched in black on one side of tooth.

Length, 5½ inches

25-
59 **SCRIMSHAW WHALEBONE CRIBBAGE BOARD**

Oval bone plaque pierced with cribbage markers, set on small turned bone feet. The centre with mahogany counter packets and with centre finial of bone displaying a sailor lad; reverse, a bouquet of flowers.

Length, 11½ inches

15-
60 **PAIR OF SCRIMSHAW DECORATED STEER HORNS**

Fine matched pair of steer horns in finely colored ivory base with black ships. Etched in continuing motifs of Diana, Masonic Emblems, Anchors, American Shield, Dogs and Ships. Finely etched in black. (2)

Length, 16 inches



SCRIMSHAW WHALING SCENE ON WHALEBONE
[NUMBER 61]

61 SCRIMSHAW WHALING SCENE ON WHALEBONE

Large section of bone from the whale's jaw, displaying the varieties of whaling. The American Whaler has come on to a school of whales, and sent out her whaleboats, which are shown in various processes of harpooning and towing, and in one case the whaleboat is capsized by a wounded whale. Finely etched in black.

Length, 30½ inches

A RARE specimen in fine condition.

[SEE ILLUSTRATION]

62 **SCRIMSHAW DECORATED POWDER HORN**

Steer horn with brass cap, decorated with spirited Naval engagement.
Length, 15½ inches

63 **FINELY DECORATED SCRIMSHAW POWDER HORN**

Exceptionally fine large steer horn, engraved and decorated in continuing scrimshaw design, "Hope", Ships, Robert Burns, The Return of the Lover, The Irish Harp, Forts and Landscapes. Finely etched in black.
Length, 20½ inches

64 **SIR CHARLES FOR'S ENGRAVED POWDER HORN**

Finely shaped steer horn, engraved with a Man-of-War in full sail, British Coat-of-Arms, and palm tree. Captioned "Jamaica". Engraved with name, "Sir Charles For's," and above the engraver's name, "W. Keenon, 91".
Length, 13½ inches

An interesting specimen of Anglo-American interest.

65 **TWO EARLY ENGLISH MARINE ENGRAVED STEER HORNS**

Finely matched curving horns; one engraved with Sailing Ship and Irish Harp; the other with coronet and Mermaid rising from the sea. Exceptionally fine in tone, with rich black and golden-yellow.
(2) *Length, 14¼ inches*

66 **IRISH MARINE ENGRAVED POWDER HORN** 18TH CENTURY

Curved horn with facettted portion at mouth. Very finely engraved with Sailing Vessel, Coat-of-Arms with supporters, and various figures, captioned with quaint mottoes; at back two dancing figures, above a Spread Eagle perched on serpent. *Length, 18½ inches*

67 **ENGRAVED POWDER HORN**

ENGLISH, 17TH CENTURY

Spirally twisted steer horn, with mouth carefully moulded. Finely engraved with panels of personages at various avocations; birds and floral scrollings.
Length, 14 inches

RARE AMERICAN AND ENGLISH
NAVAL, MARINE AND WHALING PRINTS

NUMBERS 68-96

68 NAVAL PRINTS

12-50 English Fleet Entering the Great Belt. H.M. Ships "Arrogant" and "Hecla" destroying the Batteries at Ackness. O. W. Brierley del. Colored lithograph by Day and Son. Published London, 1854. Framed. (2) *Height, 19 inches; width, 26 inches*

69 A FRENCH FRIGATE

17-50 Colored lithograph after F. C. Moller. Captioned "Frigate". Framed. *Height, 17 inches; width, 27½ inches*

70 ENGLISH COLORED MEZZOTINT AFTER C. G. DILLON, 1808

Lieut. General Don. Lt. Governor of the Island of Jersey.

14- Full-length figure in a military uniform, standing in a wooded landscape. C. G. Dillon Pinxt, L. W. Reynolds Scuplt. Published by C. G. Dillon, Jersey, Oct. 10, 1808. Framed.

Height, 18¼ inches; width, 13¼ inches

71 THREE BRITISH NAVAL HISTORICAL ETCHINGS

25- Plate II with verses, "So they fought . . . very seldom had the honor to submit", interspersed with four views of ancient vessels in action or in various climes. Plate III, with verses and views of vessels of later period. Plate IV, with verses to the submarine and views of modern ships. Proofs before letters. Each signed "W. L. Wyllie". Framed. (3) *Height, 8¾ inches; width, 13¾ inches*

72 AN ENGLISH SLOOP-OF-WAR

22-50 Sailing broadside on, over choppy sea. Many sheets reefed. Mounting 18 guns. Water color. Framed.

Height, 6½ inches; length, 9½ inches

73 OUTWARD BOUND INDIAMAN

27-50 Seen sailing broadside on, with sail partially reefed. The captain approaching in a longboat; the pilot just leaving. An antiquated steamer at left. Colored engraving. Published by J. Fairburn, London. Framed. *Height, 9¼ inches; length, 13¼ inches*

74 **THE H.C.S. "SIR DAVID SCOTT" ENTERING THE STRAITS OF LUNDA, 1830**

50 - The gallant Ship-of-the-Line is seen in the forewater, approaching a mountainous shore about to enter the straits. Commanded by Capt. David T. Ward. Mezzotint painted and published by J. W. Huggins, 105 Leadenhall St. London, March 1, 1833. Clear impression. Colored. Framed. *Height, 19 inches; length, 25 inches*

75 **THE DANISH LINE OF DEFENCE OFF COPENHAGEN, WITH NELSON'S FLEET APPROACHING**

50 - On the distant horizon is the Danish Fleet. In the forewaters the gallant ships of Nelson appear swiftly sailing to the attack. Mezzotint after the painting by N. Pocock. Engraved by R. Pollard, London. Published Aug. 1, 1801, by W. Jeffreys & Co., Earl St., Black Friars. Fine impression. Colored. Framed.

Height, 22½ inches; length, 30 inches

76 **CASSIPORE AND DUCKENSORE HOUSE, CALCUTTA**

50 - Duckensore House seen on the distant low-lying shore, at left, on wooded embankment and beach. At right a number of junks. J. Moffat del. et sculp., Calcutta, 1801. Framed.

Height, 17 inches; length, 23 inches

77 **THE DISCOVERY OF THE ROCKS IN QUEEN CHARLOTTE SOUND**

5 - A fine 18th century Frigate is seen in a sinking condition about centre of the sound; longboats and a companion vessel are nearby. Engraving; W. Alexander, del. from a sketch taken on spot by Z. Mudge. Engraved by B. T. Pouncy. Framed.

Height, 8 inches; length, 10½ inches

78 **CASTLE CORNET, GUERNSEY, CHANNEL ISLANDS**

18TH CENTURY

50 - The strongly fortified castle is seen across the sea from the breakwater of St. Peter's Town, Guernsey. The other Islands of the Channel Group and the coast of Normandy in the distance. Colored print. Bastide, Delin. C. Lempriere Perfec. W. H. Toms Scul. Printed and sold by John Ryall, London. Framed.

Height, 12½ inches; length, 18½ inches

79 **U.S. FRIGATE "CONSTITUTION"**

55 - Colored lithograph by N. Currier. Framed.

Height, 11 inches; length, 15 inches

80 FISHermen GOING ABOARD AT WORTHING

AFTER LOUTHERBOURG, 1797

12 - Two boats, one launched, the other struggling to get through the surf, approach a smack anchored off shore; other vessels in distance. Two visitors watch the scene from the shore at right. Colored aquatint. J. Louthembourg inv't & del. Etching by B. Comte, London, 1797. Framed. *Height, 14½ inches; length, 20 inches*

Companion to the following.

81 FISHermen RETURNING TO BRIGHTON

AFTER LOUTHERBOURG, 1797

12 - 56 The shore at right animated by many fishermen at their vocations and two large smacks beached beyond. Other fishing vessels are approaching the sandy beach. Colored aquatint. P. J. Louthembourg Esq. R. A. inv't & del. Etching by B. Comte, London, 1797. Framed. *Height, 14¼ inches; length, 20 inches*

Companion to the preceding.

82 "CONSTITUTION" AND "JAVA"

80 - The Capture of H. B. M.'s Sloop-of-War "Java" by the U. S. Frigate "Constitution". Colored lithograph by D. W. Kellogg and Company, Hartford, Conn. Framed. *Height, 12½ inches; length, 16¼ inches*

Companion to the following.

83 "CONSTITUTION" AND "GUERRIERE"

80 - Combat between the Frigate "Constitution" and the British Frigate "Guerrière". Colored lithograph by D. E. Kellogg & Company, Hartford, Conn. Framed. *Height, 12 inches; length, 16 inches*

Companion to the preceding.

84 CLIPPER SHIP "SWEEPSTAKES"

75 - Dedicated to Aaron J. Westervelt, Builder, of New York. F. F. Palmer lith. Colored lithograph by N. Currier. Published New York, 1853. Later impression of the plate. Framed.

Height, 20½ inches; width, 27½ inches

85 CLIPPER SHIP "OCEAN EXPRESS"

Outward Bound. "Discharging The Pilot."

25 - Sketched by J. Smith & Son, Brooklyn L. I. On stone by C. Parsons. Colored lithograph by N. Currier. Published New York, 1856. Second state of the plate. Framed. *Height, 20 inches; width, 27 inches*



NORTHERN WHALE FISHERY

[NUMBER 86]

86 NORTHERN WHALE FISHERY

A representation of the ship "Harmony" of Hull and other vessels with their boats and crews in the various processes of attacking and killing the whale in Davis's Strait and off Greenland, with the mode of flinching and taking in the blubber. Painted by W. J. Huggins. Engraved by E. Duncan. Published London, 1829. Colored aquatint. Framed. *Height, 17 inches; length, 24½ inches*

A RARE PRINT.

[SEE ILLUSTRATION]

87 **DUBLIN HARBOR**

15- The Hill of Howth, Entrance to Dublin Harbour. A Frigate occupies the centre of the picture, with the crew engaged in taking in sail. Atkins Pinxt. R. & D. Howell Sculps't. Stipple engraving, printed in color. Framed. *Height, 17 inches; width, 21½ inches*

88 **BARQUE "NORFOLK"**

65- "Barque Norfolk of Yarmouth, William J. Blyth Commander, entering Malta 1863."

Original water color drawing, captioned at lower margin. Framed. *Height, 18½ inches; width, 24 inches*

89 **UNITED STATES MAN-OF-WAR**

47 1/2- Original drawing of a United States Man-of-War. Signed A. J. P. Pool. Framed. *Height, 14½ inches; length, 20 inches*

90 **FORT, HARBOUR AND TOWN OF ST. AUBINS, JERSEY,
CHANNEL ISLANDS**

18TH CENTURY

12 1/2- Many Ships-of-War and other vessels are seen before the fine prospect of the Island in the distance. Colored engraving; J. Bastide, Delin. C. Lampriere, Perfecit. W. H. Toms, Sculp. Printed and sold in London. Framed. *Height, 13¼ inches; length, 19 inches*

91 **CLIPPER SHIP "LADY MELVILLE", 1100 TONS**

40- The "Melville" seen passing icebergs on her homeward voyage from Melbourne 21st May, 1863.

Lithograph. T. G. Dalton delt. et lith. . . . London. Framed.

Height, 15½ inches; length, 21½ inches

92 **THE GARDEN REACH, CALCUTTA**

10- In the foreground an undulating shore on which parade Europeans and Indians, some mounted, others in curious barouches. Beyond is the river with its shipping, and a wooded distant shore. Colored lithograph. Sir C. Doyly Delt. Dickenson and Co. Lith. Framed.

Height, 17½ inches; length, 22½ inches

Companion to the following.

93 **CUSTOM HOUSE WHARF, CALCUTTA**

11- At left and centre the sea with its varied shipping and docks. At right is the sandy shore animated with many natives watching the bathers. Colored lithograph. Sir. C. Doyly, Delt. Dickenson and Co. Lith. Framed. *Height, 17½ inches; length, 22½ inches*

Companion to the preceding.

94 **NAVAL PRINTS**

15- Bomarsund. Combined attack on the Forts. Final destruction of Bomarsund. O. W. Brierley del. Colored lithograph by Day & Son. Published, London, 1854. Framed. (2)

Height, 19 inches; width, 26 inches

95 **TWO NAVAL PRINTS**

15- A Gale in the Baltic; and French Fleet off Baro Sound, June 13, 1854.

O. W. Brierley del. Colored lithograph by Day & Son. Published London, 1854. Framed. (2) *Height, 19 inches; width, 26 inches*

96 **TAKING A PILOT ON BOARD**

8- The "Huggins" of London is depicted in a heavy sea with the small boat of the pilot attempting to board. Published by W. J. Huggins, 1828. Colored lithograph by Hullman. Framed.

Height, 10 inches; width, 13 inches

RARE SHIP MODELS
IN WOOD, BONE AND IVORY
AMERICAN, ENGLISH AND FRENCH
MEN-OF-WAR, FRIGATES, PRIVATEERSMEN
MERCHANTMEN AND CLIPPER SHIPS

NUMBERS 97-156

97 DECORATIVE MODEL OF THE MAN-OF-WAR "NEPTUNE"

DATED 1642

200- High stern, with glazed latticed openings and large full-length figure of Neptune, and dated 1642; below, name "Neptune" and cross dolphins. Quaint quarter galleries in crimson on green. Scrolled bow with gilded cupidons blowing trumpets. Completely rigged with sails of a later period. Deck with cannon and other equipment.

Height, 39 inches; length, 53 inches

98 MODEL OF AN ENGLISH MAN-OF-WAR

CIRCA 1750

45- Decorated hull in black, crimson and yellow, with finely carved box-wood stern, which is latticed and galleried, having quarter galleries to match. Scrolled bow, with full-length male figurehead. Completely rigged. Enclosed in glazed case.

Height, 7 inches; width, 8½ inches

99 RARE MINIATURE CARVED IVORY MODEL OF A FRENCH FRIGATE

CIRCA 1760

130- Full carved hull of one block of ivory, mounting 36 cannon. Finely carved and latticed stern with quarter galleries to match. Finely scrolled bow with full-length seaman's figure as figurehead. Completely rigged and in sail, all of which are of ivory. Full deck equipment, including a complete crew, in various occupations. Enclosed in glazed case.

Height, 8 inches; width, 12½ inches

An exceedingly fine 18th century ivory model, executed in the best manner of the period.



MODEL OF AN ENGLISH MAN-OF-WAR, CIRCA 1785
[NUMBER 100]

- 330- 100 **MODEL OF AN ENGLISH MAN-OF-WAR** CIRCA 1785
Boxwood scale model, hull painted green to waterline, above, ivory straked with black. Bow with winged effigy; galleried arched stern. Mounting 54 bronze guns. Galleried deck with numerous impedimenta. Completely rigged with unusual crow's nests. Flying the Union Jack and two signal flags. In case.

Height, 11 $\frac{7}{8}$ inches; length, 14 inches

These charming decorative models were made by the French prisoners of war, mainly at Edinburgh Castle. See Robert Louis Stevenson.

[SEE ILLUSTRATION]



MODEL OF THE FRENCH MAN-OF-WAR, "LE VRAY CITOYEN"

[NUMBER 101]

101 **MODEL OF THE FRENCH MAN-OF-WAR, "LE VRAY CITOYEN", 80 GUNS**

1795

650- Full hull, deep ivory to waterline, black above, with crimson port stripes. Carved and pierced decorated stern and quarter galleries. In gilt letters at stern, "Le Vray Citoyen 1795". Finely scrolled bow, with full-length carved and gilded figure of a Roman Warrior. Mounting 80 guns. Completely and finely rigged and with all deck impedimenta. *Height, 32 inches; length, 36 inches*

An unusually fine 18th century model of great historic interest and possessing much decorative quality. This ship was formerly the "L'Aiglon" and was changed by the Revolutionists to "Le Vray Citoyen".

[SEE ILLUSTRATION]

102 BONE MODEL OF THE FRENCH FRIGATE "DAUPHIN"

CIRCA 1790

200 ✓ Full hull, planked and ribbed in bone, mounting 20 cannon of bone. Square stern with name plate "Dauphin". Sharp bow with a fish as figurehead. Completely rigged with masts and spars of bone. Enclosed in glass globe case. *Height, 19½ inches; length, 19 inches*

103 MINIATURE SCALE MODEL OF A PRIVATEERSMAN

AMERICAN, 18TH CENTURY

40 ✓ Finely fashioned hull of boxwood mounting 8 guns. Fully rigged. Enclosed in glass case, on oblong base. *Height, 5¼ inches; width, 6½ inches*

104 MODEL OF THE MAN-OF-WAR "ROYAL WILLIAM"

ENGLISH, 18TH CENTURY

130 ✓ Full wood hull, painted bronze to waterline, black above, with white gun port stripes. Scrolled bow with carved full-length figure of William III. Completely rigged and with deck fittings, and mounting miniature cannon. *Height, 45 inches; length, 54 inches*

A fine contemporary model of the 18th century.

105 MODEL OF THE MAN-OF-WAR "VICTORY"

ENGLISH, 18TH CENTURY

110 ✓ Wood hull painted crimson, black and white. Completely rigged. Set on planked base. *Height, 19 inches; length, 21 inches*



BOXWOOD SCALE MODEL OF H.M.S. "DOLPHIN"

[NUMBER 106]

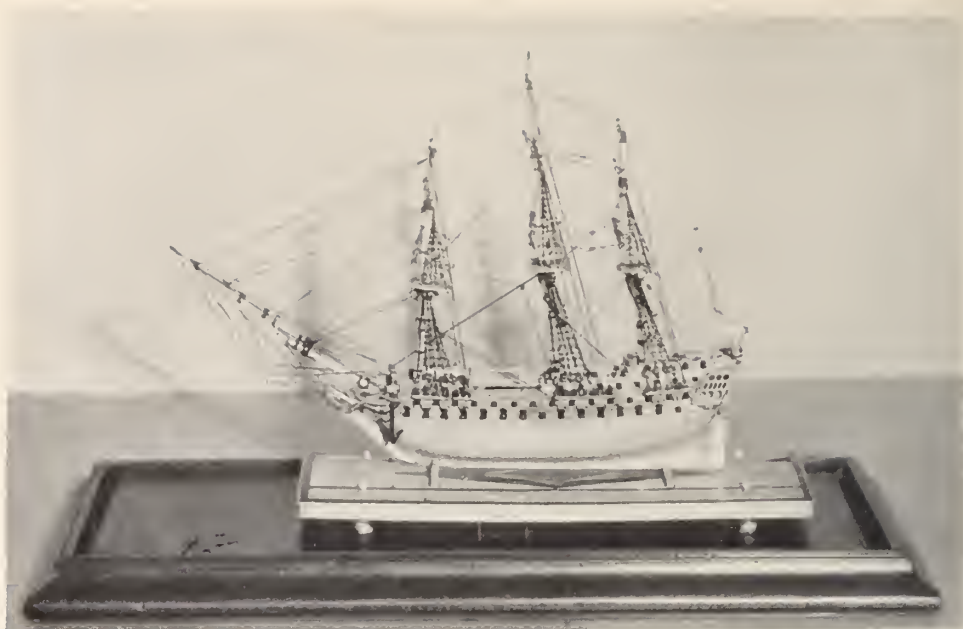
106 BOXWOOD SCALE MODEL OF H.M.S. "DOLPHIN"

ENGLISH, 18TH CENTURY

95 — Finely planked boxwood hull, mounting 80 bronze cannon. Decorated and pierced stern and quarter galleries, and scrolled bow with gilded figurehead. Completely rigged, with masts and spars of bone. Enclosed in glazed mahogany case.

Height, 19 $\frac{1}{4}$ inches; length, 24 $\frac{3}{4}$ inches

[SEE ILLUSTRATION]



RARE BONE MODEL OF AN ENGLISH MAN-OF-WAR
[NUMBER 107]

107 RARE BONE MODEL OF A MAN-OF-WAR

ENGLISH, 18TH CENTURY

375- Hull constructed entirely of bone planks, mounting small bronze cannon. Carved, latticed and pierced stern, with quarter galleries to match. Scrolled bow with carved full-length figure of warrior. Completely rigged with masts and spars of bone. Enclosed in glazed case.

Height, 10½ inches; length, 14½ inches

These bone models were made at Greenwich and Dartmouth by the French prisoners of war during the latter part of the 18th century. They are now very scarce. This is an exceptionally fine example.

[SEE ILLUSTRATION]

108 **MINIATURE MODEL IN IVORY OF A FRENCH SLOOP-OF-WAR**

CIRCA 1810

100 - Full hull. Completely rigged and with sails of ivory. The deck equipped with crew. Enclosed in glazed case.

Height, 6 inches; width, 5 inches

Many artisans were engaged in France during the 18th century carving ivory for fans. These men often turned for recreation to these fine little ships.

109 **MODEL OF THE U.S. SLOOP-OF-WAR "NIAGARA"** CIRCA 1812

10 - Full hull of polished pine with square stern and scrolled bow, mounting 20 bronze cannon on wood trucks. Completely rigged and in full sail. Set on table plaque. *Height, 20 inches; length, 22 inches*

110 **MODEL OF THE U.S.S. "CONSTELLATION"** CIRCA 1812

25 - Hull painted deep green, with black above and white gun port stripe. Mounts 36 bronze cannon. Square stern with carved decorations and deeply scrolled bow. Completely rigged.

Height, 28 inches; length, 34 inches

111 **MODEL OF U.S. FRIGATE** CIRCA 1812

200 - Full-ribbed hull, painted deep crimson, with black above and white gun port stripe. Mounting 44 bronze cannon. Decorated stern and scrolled bow. Completely rigged.

Height, 29 inches; length, 35 inches

112 **MINIATURE MODEL OF THE AMERICAN PRIVATEERSMAN "VIXEN"** CIRCA 1812

70 - Finely modelled hull, bronzed and painted black. Mounting 10 cannon. Shaped and decorated stern and quarter galleries, and scrolled bow bearing carved three-quarter length figurehead. Fully rigged as a Brig. Enclosed in glazed case.

Height, 10½ inches; length, 14 inches



MODEL OF THE U.S. FRIGATE "CONGRESS"

[NUMBER 113]

113 MODEL OF THE U.S. FRIGATE "CONGRESS" CIRCA 1812

Hull gilded to waterline, black above, lower gun course of white, covers of portholes red, with narrow strake of yellow above same. Siren as figurehead. Fine deck impedimenta, masts and spars of bone. Mounting bronze cannon. Very beautifully rigged. On stand. *Height, 29½ inches; length, 28½ inches*

An EXCEPTIONALLY FINE AND RARE model of this early period.

[SEE ILLUSTRATION]

114 **RARE MODEL OF THE U.S. SLOOP-OF-WAR**

"RATTLESNAKE", 18 GUNS

1812

100- Hull green and black, with deep ivory gun port stripe and crimson port covers. Square decorated stern and quarter galleries. Deeply scrolled bow with three-quarter length carved female figurehead. Completely rigged brig. Mounting 18 bronze cannon on trucks on deck. Set on original painted table stand.

Height, 42 inches; length, 44 inches

The U.S. Sloop of War "Rattlesnake" under command of James Renshaw successfully captured many prizes during the war of 1812. On July 11th, 1814, the "Rattlesnake" was overtaken off Cape Sable by the British Frigate "Leander", and surrendered.

[SEE FRONTISPIECE]

115 **MODEL OF AN AMERICAN SLOOP-OF-WAR**

CIRCA 1820

90- Hull painted crimson and black, with square stern and scrolled bow. Mounting 20 bronze cannon on wood trucks. Completely rigged and set on cradle base.

Height, 20 inches; length, 24 inches

116 **MODEL OF THE ENGLISH BRIG "BETTY"**

CIRCA 1825

225- Fine hull, with copper plate to waterline; above, painted black with red strake and gilded figure of Nymph at bow as figurehead. Deck with impedimenta; mounting one bronze cannon. Fully rigged, flying the blue ensign and house flag. On stand, on miniature waves.

Height, 21½ inches; length, 31 inches

An exceptionally fine model of this early type.

117 **MODEL OF A U.S. BRIG-OF-WAR**

CIRCA 1830

200 - Full finely fashioned hull of polished and stained pine. Square stern and finely scrolled bow, mounting 14 bronze cannon on wood trucks. Completely rigged, and with deck fittings.

Height, 20½ inches; length, 28 inches

118 **MODEL OF AN ENGLISH BRIG**

CIRCA 1830

75 - Hull bronze and black above, with gilded stripe. Square stern and scrolled bow, with female figurehead. Completely rigged.

Height, 11 inches; length, 15 inches

119 **MODEL OF THE AMERICAN BRIGANTINE "SNIPE"**

CIRCA 1835

30 - Hull gilded to waterline, black above. Square stern and figure of Snipe at bow. Completely rigged.

Height, 8½ inches; length, 14 inches

120 **MODEL OF A BALTIMORE BRIG**

CIRCA 1835

60 - Sharply fashioned hull with sheer lines. Painted grey and black. Long scrolled bow with full-length female figure decorated in colors. Square carved stern and quarter galleries. Completely rigged and with all deck fittings.

Height, 21 inches; length, 29 inches



MODEL OF THE U.S.S. "DELAWARE"

[NUMBER 121]

121 MODEL OF THE U.S.S. "DELAWARE"

CIRCA 1835

Full wood hull, painted green and black to waterline, white above. Square stern with carved galleries, scrolled bow. Completely rigged and with full deck equipment. Mounts bronze cannon.

Height, 28½ inches; length, 34½ inches

[SEE ILLUSTRATION]

122 MODEL OF THE AMERICAN PACKET SHIP "SHERIDAN"

AMERICAN, 1837

100 - Hull green, black above, with painted gun port stripe. Set in miniature waves, with a pilot boat to the right. Fully rigged and under all canvas. Complete deck fittings. In glazed case with mirror back.

Height, 13 inches; width, 23½ inches

The Packet Ship "Sheridan" was built by Brown & Bell for the Dramatic Line of Packets from New York to Liverpool. This is a fine original model.

123 MODEL OF THE FULL RIGGED SHIP "LILLY" OF YARMOUTH, ENGLAND

CIRCA 1840

70 - Hull bronze to waterline, black above. Decorated stern with name, and finely scrolled bow with full-length carved female figurehead. Completely rigged.

Height, 13½ inches; length, 24 inches

124 MODEL OF THE ENGLISH TEA CLIPPER "PRINCESS ROYAL"

CIRCA 1840

100 - Full hull, bronze to waterline, black above, with gilded stripe. Finely decorated stern and long scrolled bow, with carved three-quarter length female figure. The ship is completely rigged to the minutest detail, and with all deck fittings.

Height, 17 inches; width, 27 inches

The "Princess Royal" was one of the fastest English China Tea Clippers and was owned by Joseph Somes, one of the promoters of Lloyd's Register.

125 **MINIATURE MODEL OF AN AMERICAN BARK** CIRCA 1840

150- Complete miniature hull, painted tan to waterline, black above, with white gun port stripe. Rounded stern and figurehead at scrolled bow. Completely rigged with masts and spars of boxwood, and with deck impedimenta. Enclosed in glass globe case.

Height, 10 inches; length, 11 inches

126 **MODEL OF AN ENGLISH FRIGATE** CIRCA 1840

185- Deep hull with sheer lines, painted crimson and black. Decorated at stern with gilded Spread Eagle and at bow with three-quarter length female figure. Completely rigged and fitted with cannon and all deck equipment.

Height, 32 inches; length, 46 inches

127 **MODEL OF AN ENGLISH FULL-RIGGED SHIP** CIRCA 1840

110- Full hull, painted green and black, with gilded stripe. Rounded stern with gilt scroll carving. Bow fitted with three-quarter length carved female figure. Completely rigged and displayed in full sail. Set on platform base.

Height, 16½ inches; length, 26 inches

128 **MINIATURE MODEL OF AN ENGLISH CUTTER** CIRCA 1840

65- Hull bronze and painted black with gilt stripe. Completely rigged and in full sail. Enclosed in glazed case.

Height, 8 inches; length, 10 inches

Sailing to port.

129 **MINIATURE MODEL OF AN ENGLISH CUTTER** CIRCA 1840

55- Matching the preceding, sailing to starboard.

Height, 8 inches; length, 10 inches



MODEL OF THE BRIG "STAR"
OF BALTIMORE
[NUMBER 130]

- 130 MODEL OF THE BRIG "STAR", OF BALTIMORE CIRCA 1845
Wood hull, bronze to waterline, black above. Scrolled at bow, and
square stern. Completely rigged. Set on cradle base.

Height, 19½ inches; length, 26 inches

[SEE ILLUSTRATION]

131 **MODEL OF AN AMERICAN WHALER** CIRCA 1845

270 - Full blunt hull with original copper sheathing to waterline, black above. Completely rigged and equipped with four whaleboats, and trying-out stoves on deck. Set in cradle stand.

Height, 27½ inches; length, 39 inches

132 **MODEL OF THE U.S.S. "PENNSYLVANIA"** CIRCA 1845

250 - Full wood hull, painted green and black, with white gun port stripes. Square stern with decorated quarter galleries. Deep scrolled bow with carved full-length figure. Mounted with bronze cannon. Completely rigged and with all deck equipment.

Height, 33½ inches; length, 41 inches

133 **MODEL OF AN AMERICAN FULL-RIGGED SHIP** CIRCA 1850

125 - Finely modelled hull, painted in orange and black. Semi-rounded stern and scroll at bow. Completely rigged and with deck fittings.

Height, 25 inches; length, 31 inches

134 **MODEL OF AN AMERICAN BARK** CIRCA 1850

95 - Hull painted deep purple and black. Rounded stern and scrolled at bow. Completely rigged and in full sail. Enclosed in glazed case.

Height, 15 inches; length, 17 inches

135 **MINIATURE MODEL OF THE AMERICAN BARK "HAWK"**

CIRCA 1850

45 - Carved hull of mahogany with square stern and sharp bow. Minutely rigged and with all deck fittings. Enclosed in glass globe case.

Height, 10½ inches; length, 13½ inches

136 **MODEL OF THE CLIPPER SHIP "SEA SERPENT"** CIRCA 1850

260 - Ribbed hull of polished fruitwood. Semi-square stern and sharp bow, fitted with carved and gilded Sea Serpent. Completely rigged and with deck equipment.

Height, 26 inches; length, 31 inches

The California Clipper Ship "Sea Serpent" was built by George Raynes of Portsmouth, New Hampshire, for Grinnel Minturn & Co. of New York, in 1850. She made many notable runs between New York and San Francisco.



MODEL OF THE AMERICAN CLIPPER SHIP "LIGHTNING"
[NUMBER 137]

- 375- 137 **MODEL OF THE CLIPPER SHIP "LIGHTNING"** AMERICAN, 1845
Wood hull, bronze to waterline, black above, with gilt stripe. Finely
scrolled bow and rounded stern. Completely rigged in pine, the
spars made to represent furled sails. Complete deck fittings. Set
on miniature ways. *Height, 19 inches; length, 30 inches*
The "Lightning" was built by Donald McKay in 1854 for James
Baines & Co., and was used in the Australian trade. This model is
of exceptional quality in proportion and rigging.

[SEE ILLUSTRATION]

- 70 - 138 **MODEL OF THE AMERICAN SHIP "GLEN ISLAND"** CIRCA 1850
Hull bronze to waterline, black above, having rounded stern and finely carved female figure at bow. The ship is completely rigged with masts and spars of pine, and is equipped with all deck fittings.
Height, 18½ inches; width, 28 inches

- 35 - 139 **MODEL OF AN AMERICAN FULL-RIGGED SHIP** CIRCA 1850
Hull painted black with gilded stripe, with fine sheer lines. Completely rigged, with masts and spars of maple and with deck fittings of bone.
Height, 11 inches; length, 13½ inches

- 115 - 140 **MODEL OF THE CALIFORNIA CLIPPER SHIP "HORNET"**
CIRCA 1851
Hull painted green to waterline, black above, with gilded stripe. Finely rounded stern and sharp scrolled bow with gilded figurehead; a three-quarter length carved female figure. The ship completely rigged and with all deck fittings.
Height, 17 inches; length, 25 inches

A contemporary sailor's model, purporting to be the California Clipper Ship "Hornet", built by Jacob Westervelt & Son, New York, in 1851, for Chamberlain & Co.

- 95 - 141 **MODEL OF THE ENGLISH BARK "BEAR"** CIRCA 1855
Hull bronzed and black with red stripes. Rounded stern and carved figure at bow of a bear. Completely rigged and with all sails set. Enclosed in glazed case.
Height, 14 inches; length, 21 inches

142 **MODEL OF THE AMERICAN CLIPPER SHIP "BEACON LIGHT"**

CIRCA 1855

235- Fine sheer hull, painted deep ivory to waterline, black above. Rounded stern and sharp bow, with full-length figure of a lady of the fifties, carved and gilded. Completely rigged and with all deck impedimenta. *Height, 27 inches; length, 38 inches*

The clipper ship "Beacon Light" was owned by J. A. Stetson of Boston, Mass., and was built in Chelsea, Mass., in 1855.

143 **MODEL OF THE CALIFORNIA CLIPPER SHIP "WAR HAWK"**

CIRCA 1855

260- Hull in deep ivory and black, with rounded stern and carved full-length figure of an American Indian at bow. Completely rigged and with deck equipment. *Height, 26 inches; length, 37 inches*

The California Clipper Ship "War Hawk" was built by George W. Jackman at Newburyport, Mass., in 1855.

144 **MODEL OF A BALTIMORE BRIG**

CIRCA 1855

✓50- Hull painted green and black, with rounded stern and scrolled bow. Completely rigged and with deck fittings. Set on cradle base.

Height, 15 inches; length, 21 inches

145 **MODEL OF THE ENGLISH CLIPPER SHIP "RODNEY"**

ENGLISH, 1855

110- Graceful long hull equipped with Rampant Lion figurehead. Painted black and rose. Completely rigged with masts and spars of box-wood and with all sails set. Full deck equipment. Enclosed in glazed case. *Height, 24 inches; width, 39 inches*



MODEL OF THE CHINA CLIPPER "TEA QUEEN"
[NUMBER 146]

146 MODEL OF THE CHINA TEA CLIPPER "TEA QUEEN"

ENGLISH, 1860

Constructed hull of alternating planking of mahogany and oak. Carved and gilded scroll at stern, with finely carved figurehead of full female figure flanked by lions at bow. Fully rigged and equipped with all deck fittings. Set on platform base.

Height, 38 inches; length, 60 inches

An exceptionally fine model of rare quality. Evidently the work of a clever artisan who enlisted as a ship's carpenter. The China Clippers were built in England to compete with the American Clipper Ships of the period. The ships were fast and were known for their finely carved figureheads and stern pieces.

[SEE ILLUSTRATION]

- 147 **MODEL OF AN AMERICAN CLIPPER BARK** CIRCA 1860
Finely fashioned hull with sheer lines. Painted green and black, with gilt stripe. Square stern and sharp bow. Completely rigged and with all deck impedimenta.
Height, 16 inches; length, 20½ inches
- 148 **MODEL OF AN AMERICAN FULL-RIGGED SHIP** CIRCA 1860
Fine sheer hull of polished mahogany. Completely rigged with masts and spars of bone. Set on cradle stand.
Height, 14 inches; length, 16 inches
- 149 **MODEL OF AN ENGLISH BRIGANTINE** CIRCA 1860
Hull painted black, with yellow stripe. Completely rigged, and enclosed in glazed case.
Height, 15 inches; width, 21 inches
- 150 **MODEL OF AN AMERICAN CLIPPER SHIP** CIRCA 1860
Hull bronzed to waterline, black above. Fine sheer lines. Bow with carved full-length figure in bone. Completely rigged, with all masts and spars of bone, and with all deck impedimenta.
Height, 14½ inches; width, 21½ inches
- 151 **MODEL OF AN ENGLISH BARK** CIRCA 1860
Hull painted grey, with white and black stripe. Completely rigged and with all deck equipment. Set on mahogany table base.
Height, 16 inches; length, 22 inches
- 152 **MINIATURE MODEL OF AN AMERICAN SLOOP** CIRCA 1865
Hull bronzed and painted black. Completely rigged and in full sail. Enclosed in glazed case. *Height, 7 inches; length, 7 inches*
- 153 **MINIATURE MODEL OF THE NEW YORK PILOT BOAT
"NUMBER SEVEN"** AMERICAN, 1860
Hull bronzed and painted black, with gilded stripes. Completely rigged and in full sail, including flying jib. Enclosed in glazed case.
Height, 9 inches; length, 9 inches



MODEL OF THE CALIFORNIA CLIPPER BARK "GOLDEN AGE"
[NUMBER 154]

154 MODEL OF THE CALIFORNIA CLIPPER BARK "GOLDEN AGE"

AMERICAN, 1860

Wood hull, painted tan, black and white. Completely rigged and with all deck fittings. Set in miniature waves and enclosed in painted semi-circular case. *Height, 16½ inches; length, 24 inches*

The Clipper Bark "Golden Age" sailed from Boston in 1853 to San Francisco in 103 days. She was one of the most famous bark-rigged vessels of her day.

[SEE ILLUSTRATION]

155 PINE MODEL OF AN AMERICAN FULL-RIGGED SHIP

CIRCA 1865

Full hull in natural color. Completely rigged and with all deck fittings. *Height, 16 inches; length, 20 inches*



MODEL OF AN AMERICAN FOUR-MASTED BARK, 1865
[NUMBER 156]

- 156 **MODEL OF A FOUR-MASTED BARK** AMERICAN, 1865
Wood hull, bronze to waterline, black above, with painted porthole stripe. Rounded stern, with bow fitted with half-length female figure. Completely rigged, with masts and spars of pine.

Height, 18½ inches; length, 31½ inches

An excellent contemporary model.

[SEE ILLUSTRATION]

SECOND SESSION

NUMBERS 157-311

MARINE AND NAVAL RELICS

NUMBERS 157-173

157 **MODEL OF AN OLD NAVAL CANNON**

Wood model of an old Naval cannon, mounted on ship's truck. Metal wheels. *Length, 16 inches*

158 **EARLY MINIATURE SHIP'S COMPASS**

Glass dial mounted on black and gilt early Staffordshire pedestal in form of four female bust figureheads on scrolled base.

Height, 4 inches

159 **TWO OLD NAVAL CANNON MODELS**

Wood models of old Naval cannon. Mounted on ship's trucks with metal wheels. (2) *Length, 28½ inches*

160 **18TH CENTURY SHIP'S COMPASS**

Decorated dial with numerals and name "Smith & Son, London". Enclosed in circular flat glazed case. *Diameter, 5¾ inches*

161 **18TH CENTURY MODEL OF THE ANCHOR FROM THE MAN-OF-WAR "ROYAL GEORGE"**

Wood and metal model, the wood from H.M.S. "Royal George". Mounted on stepped pedestal. *Length, 12 inches*

162 **EARLY MARINER'S GLASS**

Brass and maple telescoping case fitted with lenses.

Length, 26 inches

163 **18TH CENTURY MODEL OF A SHIP'S ANCHOR**

Wood and metal model built to scale.

Length, 10 inches

164 **WHALER'S WROUGHT-IRON HARPOON** EARLY 18TH CENTURY

Curiously arranged hinged spear head with ring on shaft, which is released when struck into whale. *Length, 20 inches*

36 - 165 **WHALER'S WROUGHT-IRON HARPOON** EARLY 18TH CENTURY
Toggle head with spur at shaft. Marked on one side "Victor", the other, "J.L.P. 75".

17 50 - 166 **WHALER'S WROUGHT-IRON HARPOON** EARLY 18TH CENTURY
Curiously arranged hinged spear head with spring in shaft, which is released when struck into whale. *Length, 24 inches*

25 - 167 **TWO PAINTED BRASS MARINE LAMPS**
Circular lens protected by wire guard. Cap domed top with hinged handle. (2) *Height, 16 inches*

22 50 - 168 **TWO PAINTED BRASS MARINE LAMPS**
Circular lens, protected by wire guard. Cap domed top with hinged handle. (2)

40 - 169 **CURIOUS BRONZE EXPERIMENTAL MODEL OF AN OLD NAVAL CANNON**
Bronze and metal experimental model with percussion cap at breech. Mounted on revolving wood truck. *Length, 12¾ inches*

17 50 - 170 **EARLY MARINER'S GLASS**
Brass and leather telescoping barrel fitted with lenses. Original leather carrying case. *Length, 25 inches*

80 - 171 **RARE BRASS DOOR KNOCKER COMPOSED OF A BRASS KNOCKER AND DOOR PLATE** ENGLISH, 18TH CENTURY
Representing a sea-horse. Composed of a sea-horse body with dolphin termination. Back plate with double urn enrichments.

350 - 172 **EARLY ENGLISH MARINE COPPER AND FORGED-IRON WEATHER VANE**
Vane in the form of an ancient caravel in full sail. Stand of forged iron with central round shaft set on four strap scrolled feet; bracket at crown supports four long bar indicators, terminating in the letters N.W.S. and E. *Height, 5 feet 10 inches; spread, 3 feet*

330 - 173 **MARINE DECORATED CABINET** DUTCH, LATE 17TH CENTURY
Upper portion with arched moulded cornice, canted glazed ends and two shaped latticed and glazed doors. Lower portion with two enclosing doors having panels, each decorated with two ancient galleons in full sail, firing broadsides at one another, illustrating episodes in the naval engagements of Van Tromp with the English. The stiles enriched with floral vines on red grounds. *Height, 6 feet 3½ inches; width, 3 feet 9 inches*

EARLY DECORATIVE MAPS

OF NORTH AND SOUTH AMERICA

NUMBERS 174-183

174 EARLY COLORED MAP OF THE BERMUDAS

BY HENRICUS HONDIUS, CIRCA 1622

32 — 50
Original engraved map, embracing the main Island and at north the coast line of Florida, Virginia and Cap Cod, with Plymouth at right crowning corner. At centre is a cartouched medallion with full title. At foot, list of owners of Indian Districts, flanked by British and Bermudan Coats-of-Arms. Framed.

Height, 18 inches; width, 22 inches

175 EARLY COLORED MAP OF CENTRAL AMERICA CIRCA 1650

22 — 50
Original engraved map, embracing Novæ Hispaniæ, Mexico, Yucatan, Honduras and Costa Rica. On the two oceans many caravels are seen. At left foot is a scrolled tablet surrounded by three cupidons bearing tropical fruit. Captioned "Yacatan . . . Guatemala, Conventus Juridicus". Framed. *Height, 19 inches; length, 23 inches*

At the farthest point south, the City of Panama is seen with its beautiful bay.

176 EARLY COLORED MAP OF CALIFORNIA AND MEXICO

BY THOMAS KITCHIN, 1777

27 — 50
Original engraved map, embracing the whole of Mexico to the Gulf, the Pacific Ocean, lower California and California proper. Captioned "New Albion". The present State of Texas is captioned "Great space of land unknown." At lower left is a supplementary map of the environs of Mexico City and a medallion with inscription, "New Spain . . ." Framed. *Height, 15 inches; length, 20 inches*

177 EARLY COLORED MAP OF NEW ENGLAND

BY JOANNES JANSONIUS, CIRCA 1660

85
Original engraved map, embracing the coast of New England through to Virginia. On the Atlantic Ocean several caravels, a crocodile and a whale. The coast shows all the seaports settled. At left crown is an architectural tablet with Indian supporters inscribed, "Nova Belgica et Anglia Nova"; above the tablet is a small stockade. Framed.

Height, 18 inches; length, 22 inches

178 EARLY COLORED MAP OF THE WORLD

BY NICHOLAS VISCHER, CIRCA 1660

67⁵⁰
Original engraved map, embracing in two large circles the two hemispheres, on the seas of which are many small caravels. At centre crown within a small circle is a map of the north pole and Arctic Ocean in which Greenland, the British Isles and Russia are seen skirting the south and east. At foot the south pole and Antarctic Ocean are seen with only a small portion of South America with Cape Horn jutting in at the North. In the four spandrils beautiful views are seen; at left crown, "Phaeton in his Sun Chariot", at right crown "Jove and Juno" in their eagle drawn triumphal car, at left foot "Venus and Neptune" in a car drawn by sea-horse surrounded by Naiads; at right foot, "Peasants offering gifts to the Goddess Pomona". Framed.

Height, 20 inches; length, 24 inches

The beautiful views of the map are signed by the famous Dutch painter N. P. Berchem and by J. de Vissicher, sculpt.

179 EARLY COLORED MAP OF THE NEW ENGLAND COAST TO FLORIDA AND THE CARIBBEAN SEA

37⁵⁰
BY PETRUS SCHENCK, CIRCA 1700

Original engraved map, embracing portion of Canada, the New England Coast, the Carolinas, Florida, the West Indies almost to the equator. There is noted thereon the first mention of Southampton, on Long Island. Very comprehensive in detail from Nantucket to Salem. At left foot is a very fine view of a fleet of Spanish Galleons off the Mexican Coast, lading Treasure. Framed.

Height, 20 inches; width, 24 inches

180 **EARLY COLORED MAP OF SOUTHERN STATES OF AMERICA
AND CARIBBEAN SEA** BY NICHOLAS VISCHER, CIRCA 1700

65 - Original engraved map, embracing the coast line from Cape May, through the Caribbean Sea, with West Indies, to the equator. At right crown is a tablet supported by cupidons, inscribed "Insulæ Americanæ . . . ac Regiones Adiacenta". At left foot is a tablet of miles surrounded by Neptune and Water Nymphs. Framed.

Height, 20 inches; width, 24 inches

181 **RARE EARLY COLORED MAP AND CHART OF THE COAST
OF CALIFORNIA** BY R. AND J. OTTENS, CIRCA 1700

25 - Original engraved chart of the Pacific Ocean, showing many fine 17th century caravels in full sail. At upper right the State of California shown as an island. At right foot is a tablet crowned by a bust of Magellan and drawn by a flock of cupidons, and Neptune and Venus in their shell car. The tablet is inscribed, "Magnum Mare del Zur cum Insula California. De Groot Zund-Zee en't Englandt California." Framed.

Height, 21 inches; width, 24 inches

182 **EARLY COLORED MAP OF NEW ENGLAND, NEW YORK AND
NEW JERSEY COAST LINE** BY NICHOLAS VISCHER, CIRCA 1650

210 - Original engraved map embracing the various coast states and Pennsylvania, including Chesapeake (Chesapeake) Bay, Lange (Long) Island, Nieuw Hollant, (Cape Cod). At left, two views of Pioneers' Stockades; at foot, a panoramic view of Nieuw Amsterdam, Eylant Manhattans, surrounded by elaborate cartouche frame with Indians as supporters. Framed.

Height, 20 inches; width, 24 inches

183 **EARLY COLORED MAP OF THE VIRGINIAS**

BY HENRICUS HONDIUS, CIRCA 1630

80 - Original engraved map, embracing Chesapeake Bay with all tributaries thereto and the hinterland. At left crown is an interesting interior view of Chief Powhattan with Captain John Smith seated on a dais, a party of Indians banqueting beyond. At right is the British Coat-of-Arms, and the figure of an Indian. Framed.

Height, 17 inches; width, 21 inches

A RARE COLLECTION OF SHIPS' PEWTER

SILVER AND GLASS

NUMBERS 184-208

ENGRAVED SHIPS' SILVER AND PEWTER

Possibly no other collector has shown the deep interest in assembling the purely utilitarian marine objects of our old ships as has Mr. Waugh. This is not strange, as he is of "Cape Cod Folks", which is synonymous to "of the Sea."

His people have filled every position 'board ship' from cabin boy and foremast hand to mate and captain; so it is but natural that his thought should trend strongly toward the intimate things of the sailor's life; the things with which they actually lived.

This trend is exemplified in the wonderful group of plates, mugs, etc., which includes both the pewter of the foc'sle, for use by the seamen, and the more pretentious silver of the Master's Cabin.

Collecting these specimens entailed much time and labor. Secured at various times and in places ranging from the homes of the direct descendants of the old whalers, to the fast disappearing old 'Chandler's Shop', they represent a collection which it is safe to say cannot be duplicated.

Incidentally, the old ship chandlers' shops along the Delaware River front in Philadelphia proved unusually productive of this sort of material. There, under much old sail cloth and early gear and tackle of all description, were unearthed a great many of the pewter plates in Mr. Waugh's collection.

184 PEWTER SHIP'S TANKARD

EARLY 18TH CENTURY

36 / Pear-shaped body with shaped strap handle, set on short domed foot. Decorated at side with an engraved medallion of an early Man-of-War. Impressed hall mark at collar, and inscribed at base.

Height, 4 $\frac{3}{4}$ inches

[SEE ILLUSTRATION]



PEWTER SHIP'S
TANKARD
[NUMBER 184]

LARGE PEWTER
SHIP'S TRENCHER
[NUMBER 185]

PEWTER SHIP'S
TANKARD
[NUMBER 186]

- 80 - 185 **LARGE PEWTER SHIP'S TRENCHER** ENGLISH, 18TH CENTURY
Large circular platter with wide lip. Decorated at centre with
engraved medallion of an 18th century Man-of-War in full sail. Many
hall marks at base and lip. *Diameter, 16½ inches*

[SEE ILLUSTRATION]

- 25 - 186 **PEWTER SHIP'S TANKARD** EARLY 19TH CENTURY
Straight-sided slightly tapering cup fitted with strap handle, flaring
foot and with glass bottom. Decorated at side with engraved
medallion of a Frigate in full sail. *Height, 6 inches*

[SEE ILLUSTRATION]

- 27 50 -
187 **PEWTER SHIP'S TANKARD** ENGLISH, EARLY 19TH CENTURY
Straight-sided slightly tapering cup, fitted with loop handle. Decorated at side with engraved medallion of a Sloop-of-War and initials "GS".
Height, 4½ inches

- 25 -
188 **PEWTER SHIP'S TANKARD** ENGLISH, EARLY 19TH CENTURY
Straight-sided tapering cup, with loop handle and glass bottom. Decorated at front with engraved Stern View of a Man-of-War.
Height, 4½ inches

- 32 50 -
189 **PEWTER SHIP'S PLATE** EARLY 19TH CENTURY
Deep well, with wide lip. Decorated at centre with an engraved medallion of a Frigate in full sail. Marked at lip "G. F. Barthel 1819". Hall mark at base.
Diameter, 9 inches

- 37 50 -
190 **TWO PEWTER SHIP'S PLATES** ENGLISH, 18TH CENTURY
Deep well, with wide lip. One decorated with engraved medallion of a Man-of-War at anchor, the other with ship in full sail. Both bear 18th century hall marks at base. (2)
Diameter, 9⅝ inches

- 25 -
191 **PEWTER SHIP'S TANKARD** ENGLISH, 18TH CENTURY
Straight-sided cup, with ringed motif and fitted with domed cover. Finely shaped handle and thumbpiece. Ruby glass bottom. (Damaged.)
Height, 7 inches

- 15 -
192 **PEWTER SHIP'S CUP** ENGLISH, EARLY 19TH CENTURY
Pear-shaped body, with shaped loop handle set on slightly domed foot.
Height, 3½ inches

- 45 -
193 **TWO EARLY AMERICAN PEWTER PLATES** BY HENRY WILL, NEW YORK
Deep well, with wide lip. Marked at lip with inscription, "Captain Charles H. Marshall". Mark at base, "Henry Will, New York". (2)
Diameter, 9½ inches

194 TWO EARLY AMERICAN PEWTER PLATES

BY THOMAS BADGER OF BOSTON

42-50 Deep well, with wide lip. Decorated with anchor at centre and name "Ship Philadelphia". Mark at base, Spread Eagle above and below name, "Thomas Badger". (2) *Diameter, 12 inches*

195 SIX EARLY AMERICAN PEWTER PLATES

BY FREDERICK BASSETT, NEW YORK

95- Deep well, with wide lip. Decorated with ship in full sail at centre. Mark at base, "F. Bassett New York" in fan-shaped frame, and "FB" in circle. (6) *Diameter, 9 $\frac{5}{8}$ inches*

196 FOUR EARLY AMERICAN PEWTER PLATES

BY THOMAS DANFORTH, PHILADELPHIA

130- Deep well, with wide lip. Decorated with large Spread Eagle, and one marked at lip "Ship Eagle 1851". Mark at base, Spread Eagle and Shield in circle, with letters "TD." (4) *Diameter, 9 $\frac{1}{2}$ inches*

197 TWO EARLY AMERICAN PEWTER PLATES

BY PARKS BOYD, PHILADELPHIA

45- Deep well, with wide lip. Decorated with large ship in full sail. Mark on base, American Eagle surrounded by stars and "P. Boyd" beneath. (2) *Diameter, 12 $\frac{1}{8}$ inches*

198 THREE EARLY AMERICAN PEWTER PLATES

BY WILLIAM WILL, PHILADELPHIA

65- Deep well, with wide lip. Decorated with small ship in full sail, below, marked "Ship Columbus, 1845". Marked at base, "Wm. Will Philadelphia" in scroll medallion. (3) *Diameter, 9 $\frac{1}{2}$ inches*

199 THREE EARLY AMERICAN PEWTER PLATES

BY PARKS BOYD, PHILADELPHIA

60- Deep well, with wide lip. Decorated with anchor at centre and name, "Ship Pennsylvania". Mark at base, Eagle and Stars and name "P. Boyd Phila." (3) *Diameter, 9 $\frac{1}{2}$ inches*



SHIP'S SILVER

[200]

[201]

[202]

[203]

[204]

- 200 **SILVER SHIP'S TANKARD** ENGLISH, 18TH CENTURY
 Bulbous body, with flaring lip and domed base. Fitted with scrolled handle. Decorated with large engraved medallion of a Man-of-War in full sail. Hall mark at base of the Georgian 18th century period.
Height, 4½ inches

[SEE ILLUSTRATION]

- 201 **SILVER SHIP'S TEA CADDY** ENGLISH, 18TH CENTURY
 Oblong box, fitted with finely embossed hinged cover, with scrolled carrying handle. The body enriched with three engraved medallions of Men-of-War, one at front at anchor, one on either side sailing. The box is equipped with lock and key. Cover and base with hall mark of the Georgian 18th century period.
Height, 5 inches; length, 5½ inches

[SEE ILLUSTRATION]

- 202 **SILVER SHIP'S SALVER** ENGLISH, 18TH CENTURY
 Circular tray, with raised scalloped rim. Decorated with engraved medallion at centre of a Man-of-War sailing. Set on three scrolled feet. Hall marks at base of the Georgian 18th century period.
Diameter, 8⅓ inches

[SEE ILLUSTRATION]

- 203 **SILVER SHIP'S TANKARD** ENGLISH, 18TH CENTURY
 Straight-sided slightly tapering cup on domed foot. Fitted with fully fashioned loop handle. Decorated with large engraved medallion of a Man-of-War. Hall mark at base of the Georgian 18th century period.
Height, 5 inches

[SEE ILLUSTRATION]

100 -
204 **SILVER SHIP'S TANKARD**

ENGLISH, 18TH CENTURY

Pear-shaped body, fitted with shaped scrolled handle and set on domed foot. Decorated with engraved medallion of a Man-of-War in full sail. Hall mark at lip of the Georgian 18th century period.

Height, 5 inches

[SEE ILLUSTRATION]

65 -
205 **SILVER SHIP'S MUG**

ENGLISH, 18TH CENTURY

Straight-sided cup, with flaring lip and domed base. Fitted with scrolled strap handle. Decorated with engraved medallion of a Man-of-War at anchor. Hall mark at base of the Georgian 18th century period.

Height, 4 inches

52 50 -
206 **TWO EARLY AMERICAN PEWTER PLATES**

Deep well, with wide lip. Decorated with small ship and marked "Ship Eagle" below. Marked at base with Spread Eagle in shield.

(2)

Diameter, 12 inches

25 -
207 **SHIP'S CUT TUMBLER**

ENGLISH, CIRCA 1750

Crystal tumbler with flaring lip. Finely cut with early 18th century Man-of-War in sail, tropic landscape, and name "William Robinson", "Judy".

Height, 2¾ inches

A fine specimen of the early English glass, and EXCEEDINGLY RARE with fine cutting of ship subject.

30 -
208 **RARE PRESENTATION CUT GLASS NAVAL TUMBLER**

BRISTOL, 18TH CENTURY

Half barrel shape, of fine bell-toned glass. Cut with view of the Bristol Frigate "Astrea" in full sail. Inscriptions partially gilded: "Success to the Astrea", "A trifle from Yarmouth, E. B. Priestly, Midshipman".

Height, 4½ inches

On April 10th, 1795, the "Astrea" under Captain Lord Henry Paulet chased "La Gloire" and after a warm conflict, "La Gloire" lowered her colors.

RARE AMERICAN AND ENGLISH

NAVAL, MARINE AND WHALING PRINTS

NUMBERS 209-237

209 HOMEWARD BOUND

50 - An Early American Clipper Ship in full sail leaving the Golden Gate homeward bound to New York. Colored lithograph by N. Currier.

Height, 10 inches; width, 14 inches

210 AN AMERICAN FULL-RIGGED SHIP OUTWARD BOUND

22 50 - The ship is portrayed in full sail in a rolling sea. Her sails are all drawing and the artist has given an almost head-on view. Original water color drawing. Signed W. Swirgsda. Framed.

Height, 24 inches; width, 20 inches

211 RARE AMERICAN TRANSFER PICTURE ON GLASS

EARLY 19TH CENTURY

50 - View in Broadway, New York. Seen from the railed garden are the Museum and portico, and spire of Grace Church. Framed.

Height, 9¾ inches; width, 7¾ inches

212 RARE AMERICAN TRANSFER PICTURE ON GLASS

EARLY 19TH CENTURY

35 - The Merchants' Exchange, Philadelphia.

The noble columned porticoed half-round front seen in direct view. An ancient coach and groups of traders are before the edifice. Framed.

Height, 9½ inches; width, 7¾ inches

213 RARE NAVAL PAINTING ON GLASS

18TH CENTURY

25 - An English Sloop-of-War, mounting 18 guns, inward bound in full sail over a smooth green sea. Other vessels in the offing. Clouded blue sky. In original frame.

Height, 13½ inches; length, 20¾ inches

214 **A VIEW OF BRIGHTHELMSTONE, ENGLAND** 18TH CENTURY

10 - The bay at left with shipping, the rambling old village stretching out to right. Colored aquatint, F. Jukes Aquat. Etched by S. Watts. Framed. *Height, 8 inches; length, 11 inches*

215 **AMERICAN SAILING SLOOP** CIRCA 1860

30 - All sails set, sailing before a steady breeze across the forewaters. New England Coast in the distance. Oil painting. Framed.

Height, 11 $\frac{3}{4}$ inches; length, 17 $\frac{3}{4}$ inches

216 **VIEW OF CHRISTIANBORG ON THE GOLD COAST**

65 - British and other vessels in the bay before the fort flying the Danish Flag. Colored aquatint. Drawn by G. Webster. Original frame.

Height, 14 inches; length, 21 $\frac{1}{2}$ inches

217 **THE BOMBARDMENT AND CAPTURE OF ST. JEAN D'ACRE**

75 - The allied fleet vigorously attacking the strong fort of Acre. A terrific explosion seen about centre beyond the fleet and the fort. Aquatint. Lieut. J. F. Warre R.N. del. Published June 23rd, 1841 by Colnaghi and Puckle for the benefit of the families of those killed in the attack. Framed. *Height, 18 $\frac{1}{4}$ inches; length, 26 $\frac{3}{4}$ inches*

218 **L'ENTREE DU PORT DE MARSEILLES**

6 - The rocky foreshore crowded with personages watching the interesting shipping beyond and the bathers on the beach. In the mid-distance is the famous old Citadel and the rambling old town before a range of hills. Engraving after Vernet. C. N. Cochin filius et J. Ph. Le Bassocu sculpsit 1760. Framed.

Height, 20 $\frac{1}{4}$ inches; length, 29 $\frac{1}{4}$ inches

219 **H.M.S. "RODNEY"**

Majestically sailing in the English Channel, a steamer at left and a sailing vessel at right. Mounting 98 guns. Lithograph. Hubert Fry del. T. G. Dutton lith. Day & Haghe lith'rs to the Queen. Framed.

Height, 13¾ inches; length, 18½ inches

H.M.S. "Rodney" was in the squadron attacking the forts of Sevastopol, Oct. 17, 1854.

220 **THE DISMASTED INDIAMAN** AFTER WM. DANIELS R.A., 1826

The "Dunira" awash in a heavy sea, Captain Montgomerie Hamilton. Totally dismasted in a hurricane 20th Jan. 1825, eleven hundred miles east of Mauritius, which she reached in ten days and ultimately made a quick passage home. Printed and engraved by Wm. Daniels R.A. Framed.

Height, 15½ inches; length, 22 inches

221 **ELIZABETH CASTLE IN JERSEY, CHANNEL ISLANDS**

18TH CENTURY

East prospect of the Castle, with its strong fortifications seen across the mid-distance. A Frigate firing a salute toward left and many other vessels toward right. Colored engraving. Jas. D'Auvergne, Delin. Jno. Boydell, Sculp. Key and dedication on lower margin. Framed.

Height, 29 inches; length, 21½ inches

222 **BRIGHTON ROYAL CHAIN PIER** CIRCA 1830

The shore road animated with a fashionable throng about centre. Edifices at left and Chain Pier stretching out to sea at right. Colored aquatint. Stiene. View after Bruce. Framed.

Height, 6¼ inches; length, 9½ inches

223 **ENGLISH NAVAL WATER COLOR**

BY NICHOLAS POCOCK, ENGLISH, 18TH CENTURY

In the English Channel with a choppy sea, two Frigates are seen toward left; a large fishing boat at left and further vessels in the offing. Signed at right, N. Pocock. Framed.

Height, 6 inches; length, 8¼ inches

Pocock's water colors are rare, and this is an exceptionally interesting example.

224 **RARE VIEW AND PLAN OF BRIGHTHELMSTONE**

Plan of the town and reference view above. A prospect of the town from the sea, which is animated by shipping. Lithograph. Surveyed by Yeakel & Gardiner, Chichester; Arthur Wallis lith. Brighton. Framed.

Height, 14¼ inches; width, 12¼ inches

225 **SPERM WHALING WITH ITS VARIETIES**

From an original drawing by Benjamin Russel, of New Bedford, Mass. Colored lithograph, by J. H. Bufford, Boston. Above title are captions, "Waiting A Chance", "Setting on The Whale", "Ship Cutting In", "Whale Running", "Trying Out", "Stove Boat", etc., etc. Framed.

Height, 22 inches; length, 39 inches

226 **THE SPERM WHALER**

"In A Flurry." Colored lithograph by N. Currier, dated 1852. Framed.

Height, 10 inches; width, 14 inches

VERY RARE.

227 **U.S. SHIP OF THE LINE "PENNSYLVANIA", 140 GUNS**

Colored lithograph by N. Currier. Published New York, 1846. A line of dimensions below title. Framed.

Height, 9½ inches; width, 14 inches

228 **THE SAILOR'S ADIEU AND RETURN**

The Sailor's Adieu. The Sailor's Return. The sailor lad in early costume with an American Frigate shown in the distant harbor in both pictures. Colored lithograph by N. Currier. Framed. (2)

Height, 13½ inches; width, 10½ inches

229 **U.S. FRIGATE "INDEPENDENCE", 64 GUNS**

Colored lithograph by N. Currier, dated 1841. Framed.

Height, 10 inches; length, 14 inches

The Frigate "Independence" is shown off the shore of New York City. The distant City with its sky-line can be seen and off the Battery, Castle Garden.



CAPTURING A SPERM WHALE
ONE OF THE RAREST OF THE AMERICAN WHALING PRINTS
[NUMBER 230]

230 CAPTURING A SPERM WHALE

540 - Dedicated to N. and W.W. Billings, merchants of New London, by Cornelius B. Hulsart, who lost an arm on board their ship "Superior" while engaged in the whale fishery in the Pacific Ocean. Painted by William Page from a sketch by C. B. Hulsart. Engraved, printed and colored by J. Hill. Published New York 1835. Framed.

Height, 20 inches; length, 26 inches

ONE OF THE RAREST of the American whaling prints, showing the large whale in the foreground, wounded, coming to the surface and capsizing one of the whaleboats. The whaler "Superior" is shown off to the right, cutting in.

[SEE ILLUSTRATION]

231 ENGLISH NAVAL WATER COLOR

18TH CENTURY

H.M.S. "Boadicea", depending on her superior sailing manœuvring to entice the French ships toward the English squadron. At left the "Boadicea" in full sail making off from the French vessels at right. Inscribed at foot, "H.M.S. Boadicea of 38 guns, Capt. Maitland, depending on her superior sailing manœuvring with a French 74 and a Frigate to entice them to chase her toward an English squadron off Vigo". Framed. *Height, 15 inches; length, 20 inches*

232 ENGLISH NAVAL WATER COLOR

18TH CENTURY

H.M.S. "Phoebe", bringing "La Néreide" to action. At left the "Phoebe" is firing a broadside at "La Néreide" at right. Inscribed at foot, "H.M.S. Phoebe, Capt. R. Barlow, bringing to action the Néreide, French Frigate, captured in action of 2¼ hours, 21 Dec. 1797. Phoebe lost 15 men killed and wounded, Néreide 72 men killed and wounded". Framed. *Height, 15 inches; length, 20 inches*

Companion to the following.

233 ENGLISH NAVAL WATER COLOR

18TH CENTURY

The French Frigate "Néreide" striking her colors to H.M.S. "Phoebe". At left H.M. Ship with yards manned watching small boat tying up to the "Néreide" which has struck her colors. Both ships with sails almost in rags. Inscribed at foot, "H.M.S. Phoebe, Capt. R. Barlow taking possession of La Nereide, 72 men killed and wounded". Framed. *Height, 15 inches; length, 20 inches*

After the capture of the "Néreide", she was added to the British Navy under the same name.

Companion to the preceding.

234 **NELSON'S VICTORY OF THE NILE**

15 -
View 2nd of the Memorable Victory of the Nile Gained in August 1798 over the French by the British Fleet in Aboukir Bay. South-west view at 10 o'clock on the night of the 1st of August of the awful situation of the English and French Fleets in the most tremendous period when L'Orient blew up. Finished from a drawing in the possession of Capt. Sir T. B. Thompson by F. Chesham. Aquatint by W. Ellis. Published by G. Riley. In original black glass and gilded frame.

Height, 11¾ inches; length, 16 inches

Companion to the following.

235 **NELSON'S VICTORY OF THE NILE**

15 -
View 3rd of the Memorable Victory of the Nile Gained in August 1798 over the French by the British Fleet in Aboukir Bay. South-west view on the 2nd of August at the time Le Généreux and other French Vessels were escaping pursued by the Zealous. Finished from a drawing in the possession of Capt. Sir T. B. Thompson by F. Chesham, the aquatint by W. Ellis. In original black glass and gilded frame.

Height, 12½ inches; length, 16 inches

Companion to the preceding, and following.

236 **NELSON'S VICTORY OF THE NILE**

15 -
View 4th of the Memorable Victory of the Nile Gained in August 1798 over the French by the British Fleet in Aboukir Bay, West view when Victory was complete. . . . 3rd of August —, the Tonant striking to the Theseus and Leander. Finished from a drawing in the possession of Capt. Sir T. B. Thompson by F. Chesham, the aquatint by W. Ellis. Published by G. Riley. A lengthy description below title. In original black glass and gilded frame.

Height, 10½ inches; length, 14½ inches

Companion to the preceding.

237 **ADMIRAL LORD NELSON AND THE VICTORY OF THE NILE**

25 -
Bust length portrait of Nelson within an oval medallion surrounded by a naval trophy; below a fine view of the famous action, August 3rd, 1798, in which the French Fleet under Brueys was captured or destroyed with the exception of four escaping vessels. The portrait from an original picture painted by J. F. Abbott Esq. The embellishments drawn and engraved by Piercy Roberts. In original black glass and gilded frame. *Height, 11¼ inches; length, 18½ inches*

MARINE PAINTINGS AND SHIPS' PORTRAITS
BY THE ARTISTS OF THE 18TH AND EARLY

19TH CENTURY

NUMBERS 238-256

JOHANN SPIN

DUTCH, 1841

238 THE DUTCH FRIGATE "M. HARKEMA"

55 - The Frigate, depicted in full sail, having taken on the pilot, is rounding a point of land. Water color drawing, signed lower left, "J. Spin 1841". At the right, "Com. Eduard, Frigate M. Harkema 1841". Framed.

Height, 16 inches; width, 20 inches

JOHANN SPIN

DUTCH, 1841

239 THE DUTCH BRIG "ELISA"

50 - 32 - The Brig with her mainyard backed and her crew taking in sail, preparatory to anchoring in the cove. Water color drawing. Framed.

Height, 16 inches; width, 20 inches

UNKNOWN ARTIST

ENGLISH, EARLY 19TH CENTURY

240 AN ENGLISH FRIGATE ENTERING LIVERPOOL

15 - A Frigate is seen hove to taking on her Captain. Other vessels and the Port in the offing. Oil painting. Framed.

Height, 10 inches; length, 14 inches

Companion to the following.

UNKNOWN ARTIST

ENGLISH, MID-19TH CENTURY

241 AN ENGLISH FRIGATE IN FULL SAIL OFF ROTTERDAM

15 - Closely clustered houses and spires. A Ship-of-the-Line is seen gallantly sailing in the forewaters; other vessels nearby. Framed.

Height, 10 inches; length, 14 inches

Companion to the preceding.

DOMENIC SERRES

ENGLISH, 1769

242 A VIEW FROM THE GUN WHARF AT PORTSMOUTH

25 - The activities of the wharf are seen across the foreground, with shot, cannon and carriages strewn about. In the harbor beyond are many vessels preparing to sail, with a distant view of the town. Signed on gun carriage, "D.S. 1769". *Height, 9 inches; length, 19 inches*
Very freely and accurately drawn, with an interesting luminosity.

CHARLES A. POWELL

ENGLISH, 1816

243 NAPOLEON BOARDING H.M.S. "NORTHUMBERLAND"

50 - The famous old four-decker is seen at anchor off Torbay, 1816, with the shore-line and buildings in the distance. Canvas signed and dated. Framed. *Height, 19 inches; width, 23 inches*

UNKNOWN ARTIST

EARLY 19TH CENTURY

244 AN ENGLISH MAN-OF-WAR IN A HEAVY SEA

80 - The ship is portrayed in a stormy sea under a clouded sky. She is pitching heavily. The crew on deck taking in sail. Canvas. Framed. *Height, 16 inches; width, 21 inches*

UNKNOWN ARTIST

ENGLISH, CIRCA 1860

245 THE BRITISH CLIPPER BARK "HARMONY"

45 - The bark portrayed in full sail amid many ice floes. Canvas. Framed. *Height, 20½ inches; width, 30 inches*



[NUMBER 246]

UNKNOWN ARTIST

AMERICAN, CIRCA 1846

246 THE AMERICAN PACKET SHIP "NEW WORLD"

225- The great American ship is seen sailing before the wind with all sails set. She is flying the Grinnell Minturn House Flag, signal flags and the United States Flag. Distant land and other shipping activity. Finely drawn and executed original water color drawings. The sails are cut at margins and have been bulged to accentuate the wind-filled sails. Framed. *Height, 20 inches; width, 27 inches*

The original portraits of the noted American Ships are fast disappearing, particularly those of such quality as this one. The "New World," 1404 tons, was built by Donal McKay in 1846 for Grinnell & Minturn Co.'s Swallowtail Line sailing from New York to Liverpool and was much admired by the English as one of the finest American Packets afloat. On the back of the picture is a crude will in which the original owner designates who is to be the next owner of this much prized item.

UNKNOWN ARTIST

AMERICAN, 1866

100 - 247 **AN AMERICAN FRIGATE BOUND INTO NEW YORK HARBOR**

The Frigate is awaiting the pilot and has just encountered a squall. In the distance are the Highlands of New Jersey. Canvas. Dated 1866. Framed. *Height, 17 inches; width, 25½ inches*

650 - 248 **CARVED AND GILDED OVERMANTEL MIRROR**

ENGLISH, 18TH CENTURY

Oblong mirror frame with outset upper corners and scrolled base. Finely carved in leaf and dart motif. The lower panel a mirror, the upper with quaint 18th century canvas painting depicting the ship "Folly" on the Thames. *Height, 43 inches; width, 40½ inches*

In the midst of the River Thames, opposite Somerset House, a large ship called the "Folly" was anchored. During the late part of the 18th century a band of sailors who had returned and settled down formed a society called the "Sirens". They settled and rebuilt the old hull into living quarters. The upper deck offered an enchanting view of the City of London and the river. The first floor or lower deck was fitted as a dancing room, in which the musically inclined members formed an orchestra. Here the "Sirens" gathered of an evening and enjoyed their grog.

[SEE ILLUSTRATION]

130 - 249 **DECORATED MARINE MIRROR**

Moulded maple frame, with lower mirror panel and upper painting in oils on a wood panel of a Man-of-War at anchor in a French port. Land line in background, and fishing boats and other marine activity. *Height, 36 inches; width, 18 inches*

260 - 250 **DECORATED AND GILDED OVERMANTEL MIRROR**

ENGLISH, EARLY 19TH CENTURY

Moulded oblong gilt frame, with lower mirror panel and upper painted canvas displaying a view of Greenwich, England, with a fine old four-decker Man-of-War at anchor, and other naval ships. In the distance the shore line, with the Greenwich Hospital building to the right. *Height, 54 inches; width, 40 inches*



CARVED AND GILDED OVERMANTEL MIRROR
ENGLISH, 18TH CENTURY

[NUMBER 246]



DECORATED, CARVED AND GILDED
ENGLISH OVERMANTEL MIRROR

[NUMBER 251]

251 DECORATED, CARVED AND GILDED OVERMANTEL MIRROR

ENGLISH, MID-19TH CENTURY

Carved and gilded oblong frame, with lower mirror panel and upper marine painting subject by H. Gilbert. The view is of a French Man-of-War being boarded by the crew of a small English Sloop-of-War. The action is spirited.

Height, 43 inches; width, 33 inches

[SEE ILLUSTRATION]



BY SALVATORE ROSA

[NUMBER 252]

SALVATORE ROSA

ITALIAN, 1615-1673

252 MARINE AND ARCHITECTURE

The centre occupied by a mountain-skirted harbor filled with gayly beflagged Men-of-War at anchor, merchantmen and fishing boats. To the right medieval castles and the ruins of Roman temples. The foreground with brightly clad harbor folk. Unframed.

Size, 65 x 46½ inches

[SEE ILLUSTRATION]



BY SALVATORE ROSA

[NUMBER 253]

SALVATORE ROSA

ITALIAN, 1615-1673

253 MARINE AND FIGURES

In the foreground Men-of-War and merchantmen fully rigged and at anchor. To the left a crowd of tradesmen with their wares against a background of towering fortresses shielding a Romanesque church. Unframed.

Size, 65 x 46½ inches

[SEE ILLUSTRATION]

J. E. BUTTERWORTH

AMERICAN, EARLY 19TH CENTURY

254 **A SLOOP-OF-WAR TO THE RESCUE OF THE CREW OF A
DISABLED MAN-OF-WAR**

50 — The painting depicts the scene of a Naval engagement with several
dismasted Ships-of-the-Line. The small sloop and cutter engaged in
rescuing the crews. Canvas. Signed lower right. Framed.

Height, 14½ inches; width, 20½ inches

UNKNOWN ARTIST

ENGLISH, 18TH CENTURY

255 **A VIEW OF THE GREENLAND FISHERY**

40 — The picture displays an early Whaling Fleet of three large whalers
with their many boats amid the ice floes. The chase is on and
several whales have been captured. Canvas. Framed.

Height, 17½ inches; width, 23 inches

A contemporary pictorial document of early Greenland whaling.
EXCEEDINGLY RARE.

UNKNOWN ARTIST

ENGLISH, 18TH CENTURY

256 **THE "TRIUMPH" FRIGATE**

50 / The Frigate setting sail, with distant ships in the centre harbour.
To the right, a Fortress. Captioned, "The Triumph Frigate".
Canvas. Framed.

Height, 17½ inches; width, 23 inches

RARE SHIP MODELS

IN WOOD, BONE AND IVORY

AMERICAN, ENGLISH AND FRENCH

MEN-OF-WAR, FRIGATES, PRIVATEERSMEN

MERCHANTMEN AND CLIPPER SHIPS

NUMBERS 257-311

257 MINIATURE IVORY MODEL OF A ROMAN GALLEY OF THE 14TH CENTURY

Full hull, with high bow and stern, fitted with six sweeps and three masts with ivory sails. Enclosed in glass globe case.

Height, 8½ inches; length, 11 inches

170 - Carved by the ivory carvers in France during the 18th century, when the art was at its height. Many of these artisans were engaged in carving for fans, which were so much in vogue at this time.

258 BOXWOOD DOCKYARD SCALE MODEL OF THE ENGLISH FRIGATE "HORNET"

CIRCA 1770

180 - Constructed hull, painted cream to waterline, natural color with black stripes above. Finely decorated stern, with finely carved crown and name "Hornet". Quarter galleries to match. High scrolled bow with carved full-length figure of a warrior. Deck mounting 30 cannon. Equipped with standing rigging.

Height, 15 inches; length, 14 inches

A very fine dockyard model, equipped with standing rigging and genuine throughout.

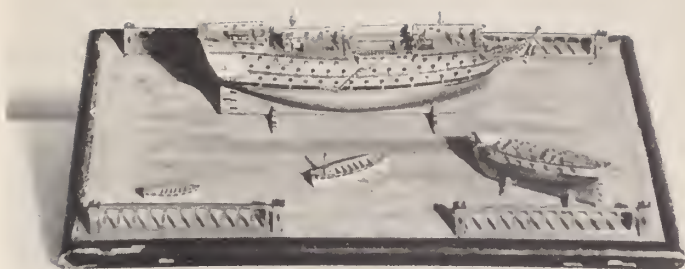
259 MODEL OF THE CONNECTICUT PRIVATEER "GENERAL PUTNAM"

CIRCA 1778

250 - Full hull, painted green and black, with white gun port stripe. Square decorated stern, with shaped quarter galleries. Finely scrolled bow. Completely rigged, with all deck impedimenta and with cannon mounted on trucks. Set in original table stand.

Height, 30 inches; length, 40 inches

The ship "General Putnam" was owned by Nathaniel Shaw Jr. & Co., of New London. She was built at Winthrop's Neck, New London, and was a successful Privateer, totalling 14 prizes.



MINIATURE BOXWOOD
SCALE ADMIRALTY DOCKYARD
CIRCA 1780

[NUMBER 260]

260 MINIATURE BOXWOOD SCALE ADMIRALTY DOCKYARD

CIRCA 1780

360 / Complete hull in boxwood, mounting 84 bronze cannon. Finely decorated and galleried stern with quarter galleries to match. Scrolled bow, mounting full-length figurehead. Completely equipped on deck. The model set in miniature dockyard, which is finely galleried in boxwood and contains another miniature scale model of a Brig and several cutters. The whole enclosed in glazed case.

Height, 4½ inches; length, 10½ inches

EXCEPTIONALLY RARE AND POSSIBLY UNIQUE. The detail is of the finest and must have been carved entirely under a strong magnifying glass.

[SEE ILLUSTRATION]



MODEL OF THE ENGLISH MAN-OF-WAR "WARRIOR", 1780
[NUMBER 261]

250 / 261 **MODEL OF THE MAN-OF-WAR "WARRIOR"** **ENGLISH, 1780**

Full-bodied hull, painted black, with three gun courses in yellow. Deeply scrolled prow, with half-length figure of Roman Warrior as figurehead. Expanding galleried high poop similarly enriched with gilding to prow. Bone deck with various impedimenta. Completely rigged, flying pennons at mastheads. Supported on oblong bone stand, the top simulating the sea, the borders of drapery festoons. In glazed case.

Height, 12 inches; length, 14½ inches

H.M.S. "Warrior" was engaged in the West Indies under Rodney with de Grasse, the French Admiral, on April 2nd, 1782.

[SEE ILLUSTRATION]



ADMIRALTY SCALE DOCKYARD MODEL
OF THE ENGLISH SLOOP-OF-WAR "LION", 1795
[NUMBER 262]

262 ADMIRALTY SCALE DOCKYARD MODEL OF THE SLOOP-OF-WAR "LION" ENGLISH, 1795

Full hull, painted bronze and black with white gun port stripe. Finely carved, gilded and glazed stern, with quarter galleries to match. Scrolled and gilded bow, with carved and gilded figurehead of a rampant lion. Boxwood deck and with many fittings. In glazed case. *Length, 23 inches*

Very few of these Admiralty models of the smaller ships of the 18th century English Navy are obtainable. It is a known fact that hulls for the Dockyards were built for all of the first and second rate ships, but the sloops-of-war and men-of-war not of the line were considered of less importance. The "Lion" however was an able little vessel and distinguished herself in many encounters. She is listed as one of the ships cruising in American waters during the war of 1812.

[SEE ILLUSTRATION]

263 **BOXWOOD SCALE MODEL OF THE MAN-OF-WAR "VICTORY"**
A FOUR-DECKER ENGLISH, CIRCA 1790

600 - Boxwood planked hull, copper-sheathed to waterline, having four gun decks, mounting bronze cannon. Finely carved decorated latticed and galleried stern, with quarter galleries to match. Gracefully scrolled stern, with gilded figurehead. Completely rigged with masts and spars of boxwood and bone. Full deck impedimenta. Enclosed in glass globe case. *Height, 16½ inches; length, 21 inches*

Fine contemporary model of Nelson's famous Flagship at the Battle of the Nile, and at Trafalgar.

264 **MINIATURE MODEL OF THE U.S.S. "CONSTITUTION"**

CIRCA 1799

95 - Hull gilded to lower tier of cannon, ivory above, with two strakes of black and crowning of gilding. The bow with scrolled head as figurehead. Mounting 74 guns. Completely rigged. Enclosed in glazed case. *Height, 9 inches; length, 11 inches*

A RARE CONTEMPORARY MODEL of the famous "Old Ironsides," which under Commander Hull vanquished the British "Guerrière" off the New England coast during the war of 1812, and vanquished the British Frigate "Java" while under command of Capt. Bainbridge.

265 **RARE CARVED IVORY MODEL OF THE TEN-GUN CUTTER "VIPER"** CIRCA 1799

275 - Full carved hull of ivory, mounting ten cannon and manned by a full miniature crew. The ship is shown in full sail, the sails of paper-thin ivory. Enclosed in glass globe case.

Height, 9 inches; width, 7 inches

The "Viper" was commanded by Lieut. Jeremiah Coghlan, who was awarded a special medal for bravery on the 26th of July, 1801. Original ivory model, carved by the 18th century ivory fan artisans.

266 **MODEL OF THE U.S.S. "CONSTITUTION"** CIRCA 1799

Hull bronze to waterline, black above, with white gun port stripe. Square decorated stern, with quarter galleries to match. Deeply scrolled bow. She mounts 44 bronze cannon. Completely rigged and in full sail. *Height, 27 inches; length, 33 inches*

360 The U.S.S. "Constitution" under Hull and Captain Bainbridge made Naval history which will live forever in the annals of the U. S. Navy.

267 **MINIATURE SCALE MODEL OF A BRIG-OF-WAR**

AMERICAN, 18TH CENTURY

Finely fashioned hull of boxwood, mounting 8 guns. Completely rigged. Enclosed in glazed case on oblong base.

Height, 5¼ inches; width, 6½ inches

268 **MINIATURE MODEL OF A SLOOP-OF-WAR**

ENGLISH, 18TH CENTURY

35 Complete hull, mounting 12 bronze cannon. Fully rigged and in sail. Enclosed in glass globe case, with mountainous background.

Height, 6½ inches; width, 10 inches

269 **ADMIRALTY SCALE MODEL OF A BRIG-OF-WAR**

ENGLISH, EARLY 19TH CENTURY

150 Construction hull of mahogany and boxwood. Built with planking on ribs. Square panelled stern with gilded decorations. Hull bronze to waterline, black and natural-colored stripings above. Bow fitted with carved and gilded three-quarter length female figure. Deck with many fittings. *Length, 43 inches*

The British Admiralty when considering new vessels first had a hull such as this specimen built to scale. When passed on by the board, it was delivered to the dockyard and construction was executed from the model.

270 **MODEL OF THE ENGLISH FRIGATE "SHANNON"** CIRCA 1812

500 - An EXCEEDINGLY RARE contemporary sailor-made model, a representation of the English Frigate "Shannon", with painted green hull and black and white port hole stripes above. The bow decorated with three-quarter length female figure. Completely rigged and in full canvas sail. The ship is fully manned with miniature crew engaged in various occupations of reefing sail in the rigging and on deck. Set on cradle base.

Height, 24 inches; length, 32 inches

Contemporary model of the English Frigate "Shannon," which under command of Capt. Broke captured the American Frigate "Chesapeake," Capt. Lawrence, June 1, 1813, off Boston Harbor. Capt. Lawrence was killed in this action, and there has always been a thought in the minds of naval historians that Lawrence was rash and impulsive to take the challenge of Capt. Broke at a time when the "Chesapeake" was refitting for sea and manned by a green crew. Capt. Lawrence, however, while mortally wounded gave this command, "DON'T GIVE UP THE SHIP".

[SEE ILLUSTRATION]

271 **MODEL OF THE U.S.S. "CONGRESS"** CIRCA 1812

425 - Hull of polished pine, with square carved stern and quarter galleries. Deeply scrolled and latticed bow. She mounts 36 guns and is completely rigged. *Height, 26 inches; length, 33 inches*

The "Congress", 36 guns, was active in the war with England in 1812 and made several long cruises against British shipping, bringing home many prizes.



CONTEMPORARY MODEL OF THE FAMOUS
ENGLISH FRIGATE "SHANNON"

[NUMBER 270]



MINIATURE IVORY MODEL
OF AN ENGLISH SLOOP-OF-WAR
[NUMBER 272]

272 MINIATURE IVORY MODEL OF AN ENGLISH SLOOP-OF-WAR

CIRCA 1810

Complete ivory hull, fitted to mount 16 guns. Fully rigged with sails of thin ivory; the deck manned with crew. Enclosed in glass globe case.

Height, 6 1/4 inches; diameter, 7 1/2 inches

[SEE ILLUSTRATION]

273 MODEL OF AN AMERICAN BRIG-OF-WAR

CIRCA 1814

Hull painted deep brown and ivory, with square stern and scrolled bow. Mounting 14 bronze cannon on wood trucks. Completely rigged. Full deck fittings.

Height, 21 inches; length, 25 inches

274 **MODEL OF AN ENGLISH SLOOP-OF-WAR** CIRCA 1820

320 - Full hull, painted green to waterline, black above, mounting 12 bronze cannon on wood truck and several bronze "Long Toms". Finely carved and latticed stern, with quarter galleries to match. Scrolled and gilded bow, with carved full-length Highlander as figurehead. Completely rigged and with all deck fittings.

Height, 43 inches; length, 62 inches

A fine contemporary constructed hull.

275 **WALNUT MODEL OF AN ENGLISH MAN-OF-WAR** CIRCA 1820

55 - Full hull of natural walnut, carved with latticed and pierced stern and scrolled bow. Mounting 60 bronze cannon. Completely rigged.

Height, 11 inches; length, 12 inches

276 **MODEL OF THE BRIGANTINE "LOCHIEL"** ENGLISH, 1825

240 - Fully constructed hull, painted green and black. Carved figure at bow and square stern. The deck is planked. Completely rigged and with full deck fittings. Set on cradle base.

Height, 35 inches; length, 45 inches

277 **MODEL OF AN AMERICAN FRIGATE** CIRCA 1830

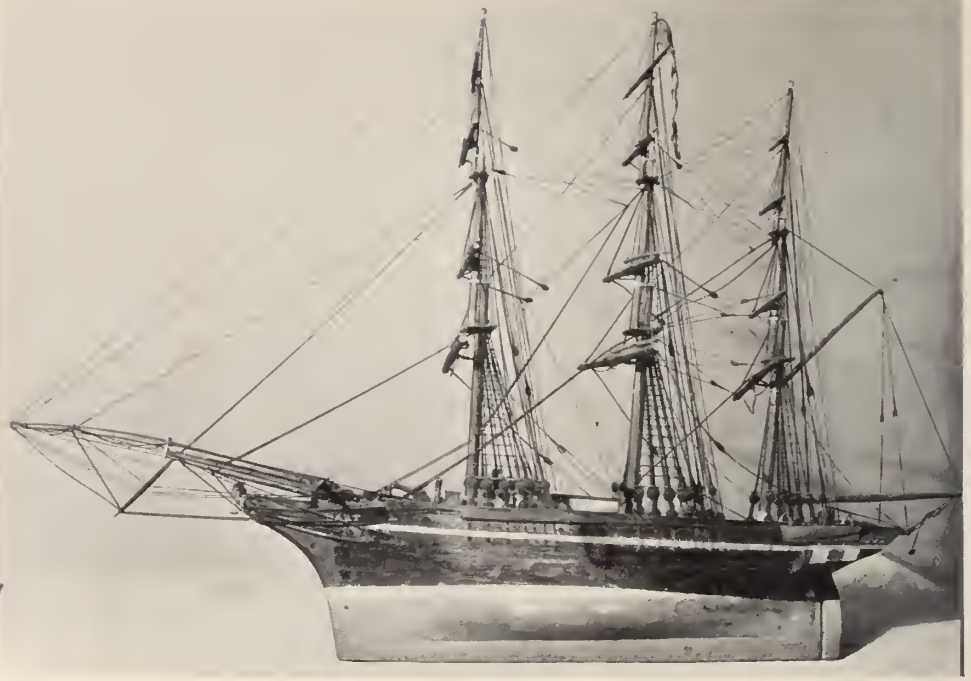
95 - Hull bronzed, painted black above, with white gunport stripe. Rounded stern and scrolled bow, equipped with carved bone figurehead. She mounts bronze cannon. Completely rigged with masts and spars of bone, and with bone deck fittings.

Height, 11 inches; length, 16½ inches

278 **MODEL OF THE ENGLISH BRIGANTINE "ARIEL"** CIRCA 1830

40 - Hull bronze to waterline, black above. Square stern and scrolled bow, with figurehead. Completely rigged and equipped with a full miniature crew in various occupations. Enclosed in glazed case.

Height, 12½ inches; width, 19 inches



MODEL OF THE AMERICAN SHIP "DART"
[NUMBER 279]

- 279 **MODEL OF THE AMERICAN SHIP "DART"** AMERICAN, 1830
Hull painted green and black, with decorated stern. Scrolled bow with finely carved figurehead. Completely rigged and with all deck fittings. Flying pennant with name "Dart".

Height, 31 inches; length, 43 inches

A fine contemporary sailor's model.

[SEE ILLUSTRATION]

280 **MODEL OF THE ENGLISH BARK "MARS" OF HULL**

CIRCA 1835

60 - Hull with fine lines, painted cream to waterline and green above. Name and port painted on stern. Deck impedimenta. Completely rigged, with all sails set and flying house and signal flags and red ensign. On stand. *Height, 11 $\frac{1}{4}$ inches; length, 16 $\frac{1}{4}$ inches*

281 **MODEL OF THE ENGLISH BARK "PRINCESS ROYAL"**

CIRCA 1840

50 - Hull painted crimson and black, with white stripe. Bow fitted with female figurehead. Completely rigged and enclosed in glazed case. *Height, 13 inches; width, 25 inches*

282 **MODEL OF A BALTIMORE BRIG**

AMERICAN, CIRCA 1840

82 50 - Hull painted crimson and black. Square stern with scrolled bow. Completely rigged. *Height, 15 inches; length, 19 inches*

283 **MINIATURE MODEL OF A YAWL**

ENGLISH, 1840

45 - Hull bronzed and painted black, with gilt stern. Completely rigged and in full sail. Enclosed in glazed case. *Height, 10 inches; length, 10 inches*

284 **MODEL OF THE U.S.S. "NORTH CAROLINA"**

CIRCA 1840

250 - Full hull, painted ivory to waterline. Square decorated stern and quarter galleries. Scroll at bow, and mounting bronze cannon. Completely rigged, with all deck equipment. *Height, 31 $\frac{1}{2}$ inches; length, 40 inches*

285 **MODEL OF A NEW BEDFORD WHALER**

CIRCA 1842

250 - Full hull, with copper sheathing to waterline. Square stern and scrolled bow. Equipped with whaleboats and trying-out furnace. Completely rigged and with deck fittings. Set on cradle base. *Height, 29 inches; length, 36 inches*

- 120 -
286 **MODEL OF THE ENGLISH BARK "SARAH ANN"** CIRCA 1850
Hull bronze to waterline, black above, with gilt stripe. Completely rigged and with all deck equipment.

Height, 15 inches; length, 21 inches

- 170 -
287 **MODEL OF AN AMERICAN FULL-RIGGED SHIP** CIRCA 1850
Hull of polished pine, with rounded stern and carved grotesque figure at bow. Completely rigged and with all deck equipment.

Height, 24½ inches; length, 29½ inches

- 225 -
288 **MODEL OF THE AMERICAN CLIPPER SHIP "SURPRISE"**

CIRCA, 1850

Hull bronze to waterline, black above, with gilded stripe. Rounded stern and sharp bow. Completely rigged with masts and spars of pine and with all deck equipment.

Height, 19 inches; length, 27 inches

275 -
Fine contemporary model of the famous California Clipper, which was built by Samuel Hall in East Boston for A. A. Low and Bro. of New York. The "Surprise" was one of the first thirteen California Clippers built.

- 275 -
289 **MODEL OF THE CALIFORNIA CLIPPER SHIP "REPORTER"**

CIRCA 1853

Hull bronze to waterline, black above. Rounded stern, with finely scrolled bow, fitted with three-quarter length female figure. Completely rigged and with all deck fittings.

Height, 27 inches; length, 33 inches

The California Clipper "Reporter" was built by Paul Curtis of East Boston for Edward Snow of the same city. She made the record time of 107 days from New York to California, March 27, 1856.



MODEL OF THE CALIFORNIA CLIPPER "HARVEY BIRCH"
[NUMBER 290]

290 MODEL OF THE CALIFORNIA CLIPPER SHIP "HARVEY BIRCH"

AMERICAN, 1854

Finely modelled hull, painted crimson and black. Rounded stern and scrolled bow, with half-length carved figure of gentleman of the 'fifties. Completely rigged and with all sails set.

Height, 21 inches; length, 30 inches

The "Harvey Birch" was built in 1854 by Irons & Grinnell at Mystic, Conn., for J. H. Brower & Co., New York. The model is finely executed with spirited lines, and has much decorative quality.

[SEE ILLUSTRATION]

170 - 291 **MODEL OF AN AMERICAN CLIPPER SHIP** CIRCA 1854

Fine sheer lines, hull painted crimson and black, gilded stripe. Rounded stern and bow fitted with carved full-length female figure. Completely rigged and with deck impedimenta. Set on cradle base.

Height, 21 inches; length, 26 inches

50 - 292 **MINIATURE MODEL OF AN AMERICAN PILOT BOAT**

CIRCA 1855

Hull painted black and bronze with gilt stripes. Completely rigged and in full sail. She carries a flying jib. Enclosed in glazed case.

Height, 9 inches; length, 9 inches

60 - 293 **MODEL OF AN ENGLISH FULL-RIGGED SHIP** CIRCA 1855

Hull painted black, with bronze stripe. Rounded stern and bow with carved figurehead. Completely rigged and enclosed in original inlaid walnut glazed case.

Height, 19½ inches; width, 20½ inches

525 - 294 **MODEL OF THE AMERICAN CLIPPER SHIP "MARY WHITRIDGE"**

1855

Complete wood hull, painted green to waterline, brown above. Scrolled bow, with gilded half-length female figure. Completely rigged and with all deck equipment.

Height, 26 inches; length, 37 inches

The Clipper ship "Mary Whitridge" was built in 1855 and was one of the thirteen medium Clippers built during this year for the California trade. She was built in Baltimore and bore the reputation of being the fastest and finest ship sailing out of Baltimore.

250 - 295 **MODEL OF THE ENGLISH TRANSATLANTIC PACKET SHIP "MARY ANN WATSON"**

CIRCA 1858

Hull painted tan to waterline, black above, with white gun port stripe. Gilded scroll at stern, and bow fitted with a half-length carved female figure. The ship is completely rigged and has minute deck fittings.

Height, 18 inches; width, 30 inches

The ship "Mary Ann Watson" was built in 1858 to compete with the fine American Packet Ships of the period, and was one of the first ships built in England that could in any way compete with our fast sailing ships.



MODEL OF THE AMERICAN CLIPPER SHIP "MARY L. SUTTON"

[NUMBER 296]

296 MODEL OF THE AMERICAN CLIPPER SHIP "MARY L. SUTTON"

1856

250 Wood hull, painted green to waterline, black above. Rounded stern with carved scroll at bow, mounting finely carved female figure. Completely rigged and with all deck equipment.

Height, 25½ inches; length, 32 inches

The California Clipper Ship "Mary L. Sutton" was built by Charles Mallory of Mystic, Conn. She was one of only eight clippers built for the California trade during the year 1856. Her record run was 110 days to San Francisco in 1856, and 103 days in 1860.

[SEE ILLUSTRATION]



MODEL OF THE AMERICAN CLIPPER SHIP "WINGED ARROW"

[NUMBER 297]

297 MODEL OF THE CLIPPER SHIP "WINGED ARROW"

AMERICAN, 1858

Finely fashioned full wood hull, painted in yellow, white and blue. Decorated at stern and fitted at bow with carved full-length figure. Completely rigged and with all deck fittings. Set on cradle base.

Height, 24 inches; length, 36 inches

A fine contemporary sailor's model of more than ordinary quality. The "Winged Arrow" was well known in New York and Boston, and made some remarkable records from Boston to the Equator.

[SEE ILLUSTRATION]



MODEL OF THE FOUR-MASTED SHIP "ARGUS"
AMERICAN, 1860
[NUMBER 298]

298 MODEL OF THE FOUR-MASTED SHIP "ARGUS"

AMERICAN, 1860

350 ✓ Full hull, bronze to waterline and black above, with gilt stripe. Rounded stern, decorated with gilt scrolling. Sharp bow, with carved three-quarter length female figure. Completely rigged and with all deck fittings. Set on straw inlaid base.

Height, 19 inches; length, 30 inches

[SEE ILLUSTRATION]

- 299 **MODEL OF THE DUTCH BARK "JAN WILLEN"** CIRCA 1860
Hull painted black with white ports and bronzed below waterline.
Completely rigged and set on table stand.

Height, 12½ inches; length, 20½ inches

- 300 **MODEL OF THE U.S.S. "HARTFORD"** CIRCA 1860
Deep ribbed hull painted in light tan and black. Scroll at bow with
name U.S.S. "Hartford". Completely rigged and in sail. Deck
fitted with bronze cannon on wood trucks.

Height, 28 inches; length, 36 inches

The U.S.S. "Hartford" was Farragut's Flagship at Mobile Bay.

- 301 **MODEL OF AN AMERICAN TWO-MASTED SCHOONER**

CIRCA 1860

Hull painted black, with gilded stripes. Displayed completely rigged
and in full sail. Enclosed in glazed case.

Height, 11 inches; length, 11 inches

- 302 **MODEL OF AN ENGLISH BRIG** CIRCA 1865

Half hull, painted black and crimson. The ship in full sail, set
against painted back foil and sailing in a miniature ocean. Enclosed
in glazed case with maple frame. *Height, 28 inches; width, 35 inches*

- 303 **MINIATURE MODEL OF THE NEW YORK PILOT BOAT
"NUMBER THREE"**

CIRCA 1865

Hull bronzed and painted black, with gilded stripes. Completely
rigged and in full sail, including flying jib. Enclosed in glazed case.

Height, 7 inches; length, 7 inches

- 304 **MINIATURE MODEL OF AN ENGLISH TEA CLIPPER**

CIRCA 1864

Hull with beautiful lines painted ivory to above waterline, black
above. Completely rigged and having fully set pine sails. Finished
in deep natural color. Enclosed in glazed case.

Height, 7½ inches; length, 11 inches

- 305 **MINIATURE MODEL OF AN AMERICAN BARK** CIRCA 1865

Hull crimson and black. Completely rigged.

Height, 6½ inches; length, 9 inches



MODEL OF THE SCHOONER "JOHN C. WILLIAMS"
AMERICAN, 1865
[NUMBER 306]

306 MODEL OF THE SCHOONER "JOHN C. WILLIAMS"

AMERICAN, 1865

385- Constructed hull of pine planking on ribs. Completely rigged and equipped with all deck fittings and running gear. Set on platform base. *Height, 23 inches; length, 29 inches*

A fine contemporary model in pine, well proportioned and the details faithfully executed. Models of the early American schooner are EXCEEDINGLY RARE.

[SEE ILLUSTRATION]

- 35-
307 **MODEL OF AN ENGLISH BARK** CIRCA 1870
Painted hull in crimson and grey. Completely rigged and set on plaque of miniature waves. *Height, 10 inches; length, 16 inches*
- 455-
308 **MODEL OF A FULL-RIGGED SHIP** ENGLISH, CIRCA 1870
Hull painted crimson and green, bow with figurehead. Completely rigged and in full sail, and with all deck fittings, including miniature crew. *Height, 12½ inches; length, 19 inches*
- 85-
309 **MODEL OF A BARK** CIRCA 1870
Full hull of mahogany, completely rigged and with all deck equipment. *Height, 14 inches; length, 18 inches*
- 25-
85-
310 **MODEL OF AN ENGLISH FULL-RIGGED SHIP** CIRCA 1870
Hull painted black, with white port stripe. Completely rigged and with all deck impedimenta. Enclosed in glazed case. *Height, 14 inches; width, 21 inches*
- 80-
311 **MODEL OF A FOUR-MASTED BARK** ENGLISH, 1870
Painted hull in white and black, bronze below waterline. Fully rigged, with all sails set. Complete deck fittings. Carved figure at bow. Set in wall plaque of miniature waves with decorative back foil. *Height, 20½ inches; width, 36 inches*

total 32,261. —

*This catalogue designed by The Anderson Galleries
Composition and press-work by
Publishers Printing Company, New York*

THE METROPOLITAN
MUSEUM OF ART

Thomas J. Watson Library

